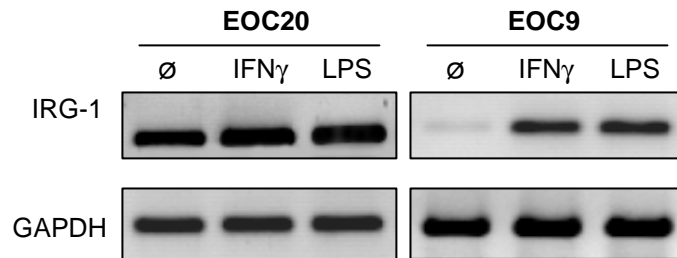
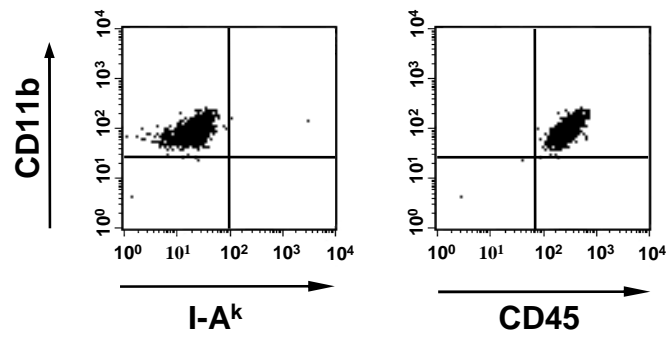


Figure 1
Donnou S.

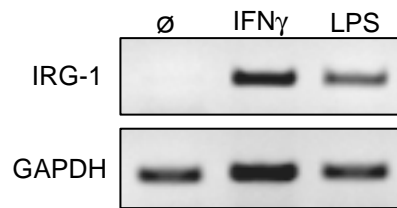
A.



B.

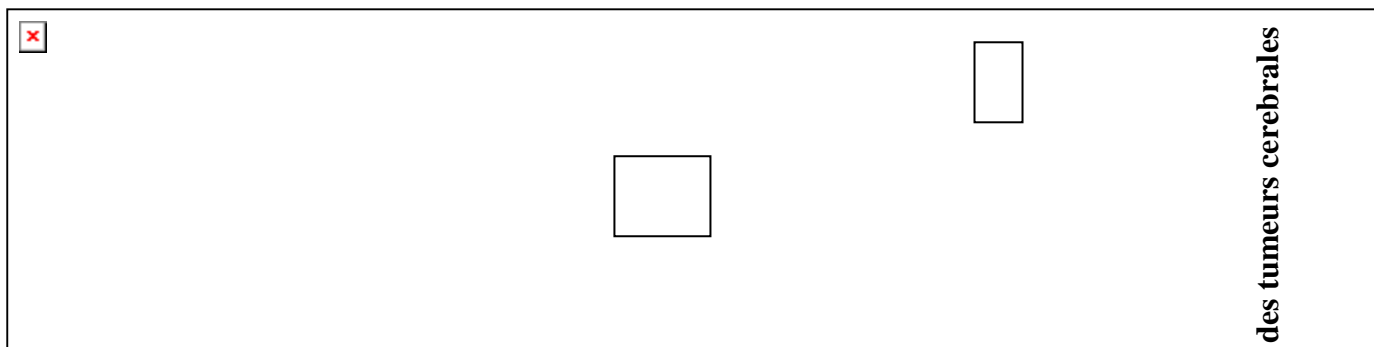


C.



caractérisation des cellules microgliales adultes et de leur potentiel en immunothérapie des tumeurs cérébrales
TEL-00341604

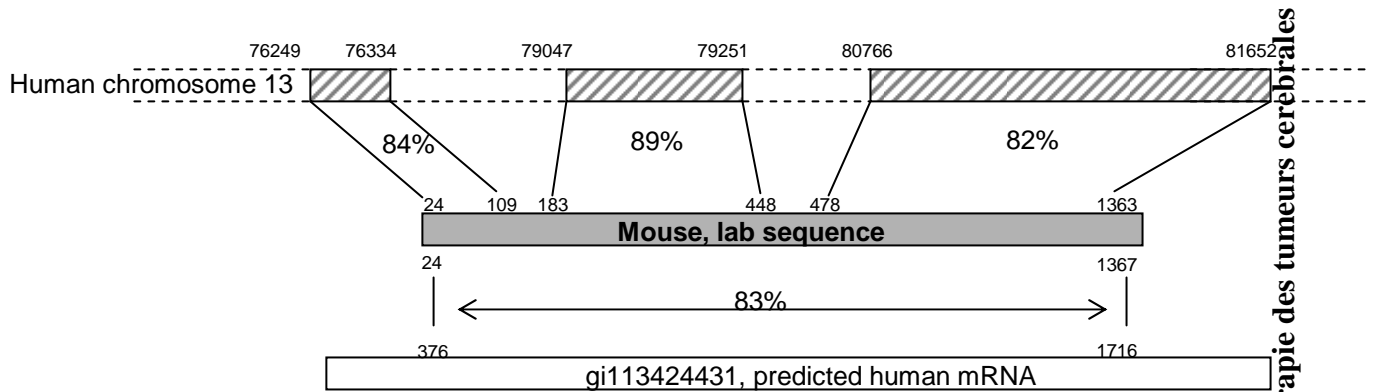
Figure 2
Donnou S.



caractérisation des cellules microgliales adultes et de leur potentiel en immunothérapie des tumeurs cérébrales
TEL-00341604

Figure 3
Donnou S.

A.



B.

1 ATG AGA AGG TCA AGC AGA TCA GAA GAT ATT TTG GAA ATA GAT GAA CGC AAG GAC CAC AGA CAG CTG ACC AGC TCT ATC ACA GAA AGC TTT 90
 1 M R R (S) (S) R (S) E D I L E I D E R K D H R Q L (S) S (S) I T E S F 30

91 GCC ACA GCA ATC CAT GGC TTG AAA GTG GGA CAC CTG ACA GAT CGT GTT ATT CAG AGG AGC AAG AGG ATG ATT CTA GAC ACT CTG GGT GGT 180
 31 A T A I H G L K V G H L T D R V I Q R (S) K R M I L D T L G A 60

181 GGG TTC CTG GGA ACC ACT ACG GAA GTG TTT CAC ATA GCC AGC CAA TAT AGC AAG ATC TAC AGT TCC AAC ATA TCC AGC ACT GTT TGG GGT 270
 61 G F L G T T T E V F H I A S Q Y S K I Y S S N I S S T V W G 90

271 CAG CCA GAC ATC AGG CTC CCG CCC ACA TAT GCT GCT TTT GTG AAC GGT GTG GCT ATT CAC TCC ATG GAT TTT GAT GAC ACG TGG CAC CCT 315
 91 Q P D I R L P P T Y A A F V N G V A I H S M D F D D T W H F 120

361 GCC ACC CAC CCT TCT GGG GCT GTC CTT CCT GTC CTC ACA GCT TTA GCA GAA GCC CTG CCA AGG AGT CCA AAG TTT TCT GGC CTT GAC CTC 450
 121 A T H P S G A V L P V L T A L A E A L P R (S) P K F (S) G L D L 150

451 CTG CTG GCT TTC AAT GTT GGT ATT GAA GTG CAA GGC CGA TTA CTG CAT TTC GCC AAG GAG GCC AAT GAC ATG CCA AAG AGA TTC CAT CCC 540
 495 L L A F N V G I E V Q G R L H F A K E A N D M P K R F H F 180

541 CCT TCC GTG GTA GGA ACG TTG GGT AGT GCT GCT GCT GCA TCC AAG TTT TTA GGA CTT AGC TCG ACA AAG TGC CGA GAA GCT CTG GCC ATT 630
 181 P S V V G T L G S A A A A S K F L G L S S T K C R E A L A I 210

631 GCT GTT TCC CAT GCT GGG GCA CCC ATG GCC AAT GCT GCC ACC CAG ACC AAG CCC CTC CAC ATT GGC AAT GCT GCC AAG CAT GGG ATA GAA 720
 211 A V S H A G A P M A N A A T Q T K P L H I G N A A K H G I E 240

721 GCT GCA TTT TTG GCA ATG TTG GGT CTC CAA GGA AAC AAG CAG GTC TTG GAC TTG GAG GCA GGA TTT GGG GCC TTT TAT GCC AAC TAT TCC 810
 241 A A F L A M L G L Q G N K Q V L D L E A G F G A F Y A N Y (S) 270

811 CCA AAA GTC CTT CCA AGC ATA GCT TCC TAC AGT TGG CTG CTG GAC CAG CAG GAC GTG GCC TTT AAG CGT TTT CCT GCA CAT TTA TCT ACC 900
 271 P K V L P S I A S Y S W L L D Q Q D V A F K R F P A H L S T 300

901 CAC TGG GTG GCA GAC GCA GCT GCA TCT (S) GTG AGA AAG CAC CTT GTA GCA GAG AGA GCC CTG CTT CCA ACT GAC TAC ATT AAG AGA ATT GTC 990
 301 H W V A D A A A (S) V R K H L V A E R A L L P T D Y I K R I V 330

991 CTC AGG ATA CCA AAT GTC CAG TAT GTA AAC AGG CCC TTT CCA GTT TCG GAG CAT GAA GCC CGT CAT TCA TTC CAG TAT GTG GCC TGT GCC 1080
 331 L R I P N V Q (Y) V N R P F P V (S) E H E A R H S F Q Y V A C A 360

1081 ATG CTG CTT GAT GGT GGC ATC ACT GTC CCC TCA TTC CAT GAA TGC CAG ATC AAC AGG CCA CAG GTG AGA GAG CTG CTC AGT AAG GTG GAG 1170
 361 M L L D G G I T V P S F H E C Q I N R P Q V R E L L S K V E 400

1171 CTG GAG TAC CCT CCG GAC AAC TTG CCA AGC TTC AAC ATA CTG TAC TGT GAA ATA AGT GTC ACC CTC AAG GAT GGA GCC ACC TTC ACA GAT 1260
 391 L E Y P P D N L P S F N I L Y C E I S V T L K D G A T F T D 800

1261 CGC TCT GAT ACC TTC TAT GGG CAC TGG AGA AAA CCA CTG AGC CAG GAG GAC CTA GAG GAA AAG TTC AGA GCC AAT GCC TCC AAG ATG CTC 1350
 421 R S D T F Y G H W R K P L (S) Q E D L E E K F R A N A S K M L 800

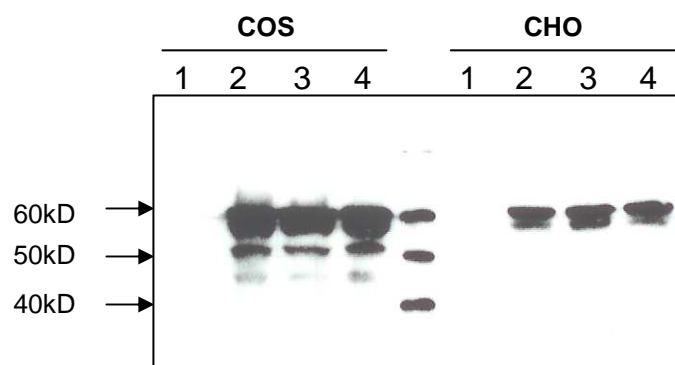
1351 TCC TGG GAC ACA GTG GAA AGC CTT ATA AAG ATA GTC AAA AAT CTA GAA GAC CTA GAA GAC TGT TCT GTG TTA ACT ACA CTT CTC AAA GGA 1440
 451 S W D T V E S L I K I V K N L E D L E D C S V L T T L L K G 830

1441 CCC TCT CCA CCA GAG GTA GCT TCA AAC TCT CCA GCA TGT AAT AAT TCT ATC ACA AAT CTC TCC TGC 1506
 481 P S P P E V A S N S P A C N N S I T N L S C 502

caractérisation des cellules microgliales adultes et de leur potentiel en immunothérapie des tumeurs cérébrales

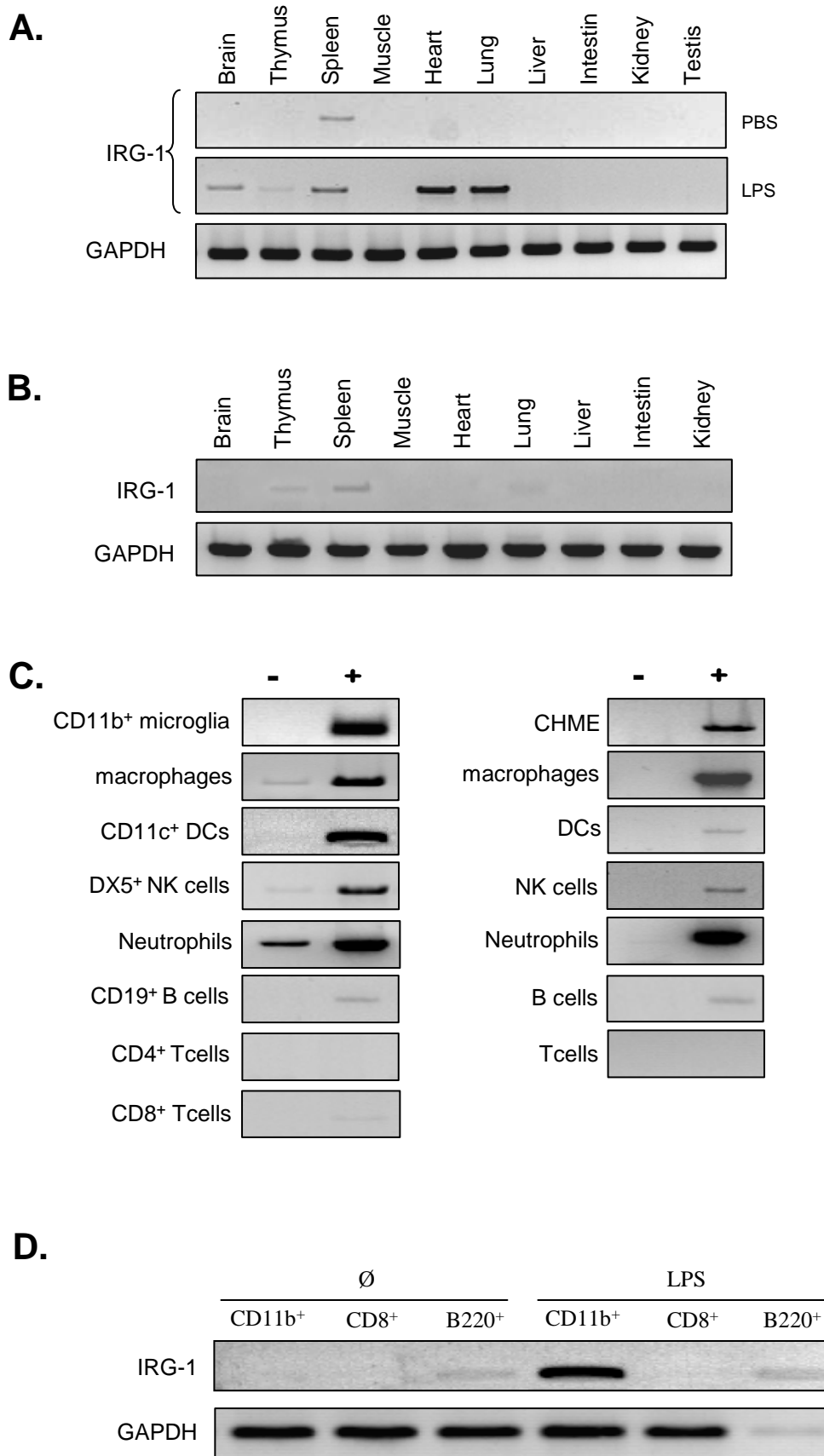
TEL : 00341604

Figure 4
Donnou S.



caractérisation des cellules microgliales adultes et de leur potentiel en immunothérapie des tumeurs cérébrales
TEL-00341604

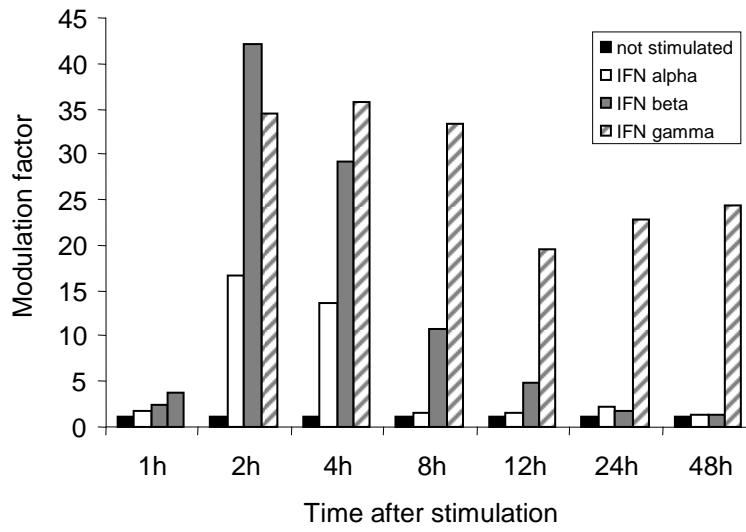
Figure 5
Donnou S.



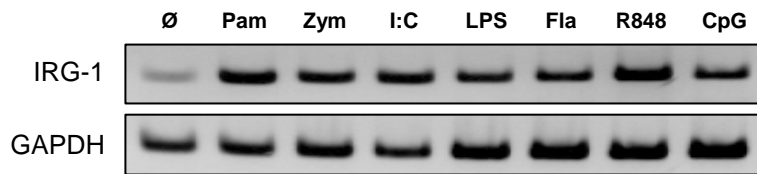
caractérisation des cellules microgliales adultes et de leur potentiel en immunothérapie des tumeurs cérébrales
TEL-00341604

Figure 6
Donnou S.

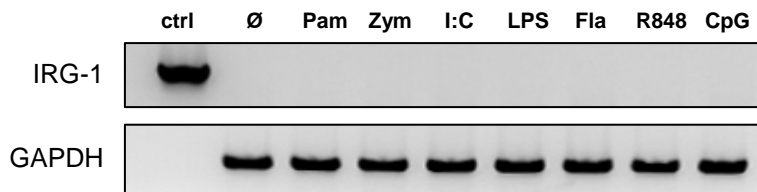
A.



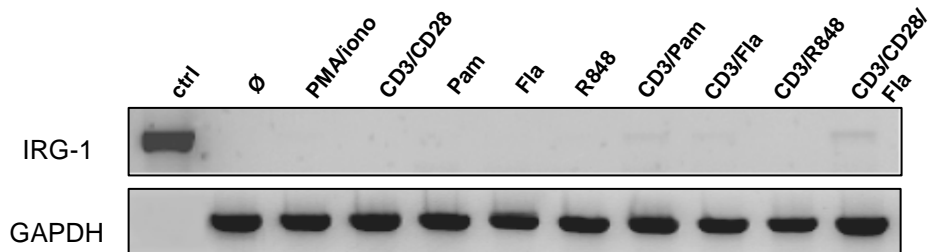
B.



C.



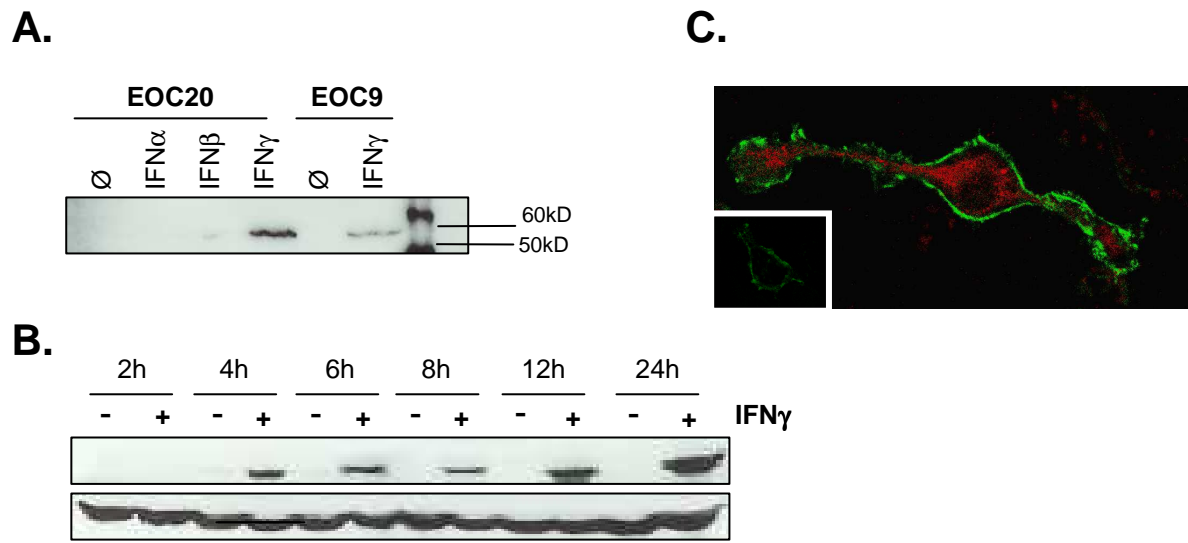
D.



caractérisation des cellules microgliales adultes et de leur potentiel en immunothérapie des tumeurs cérébrales

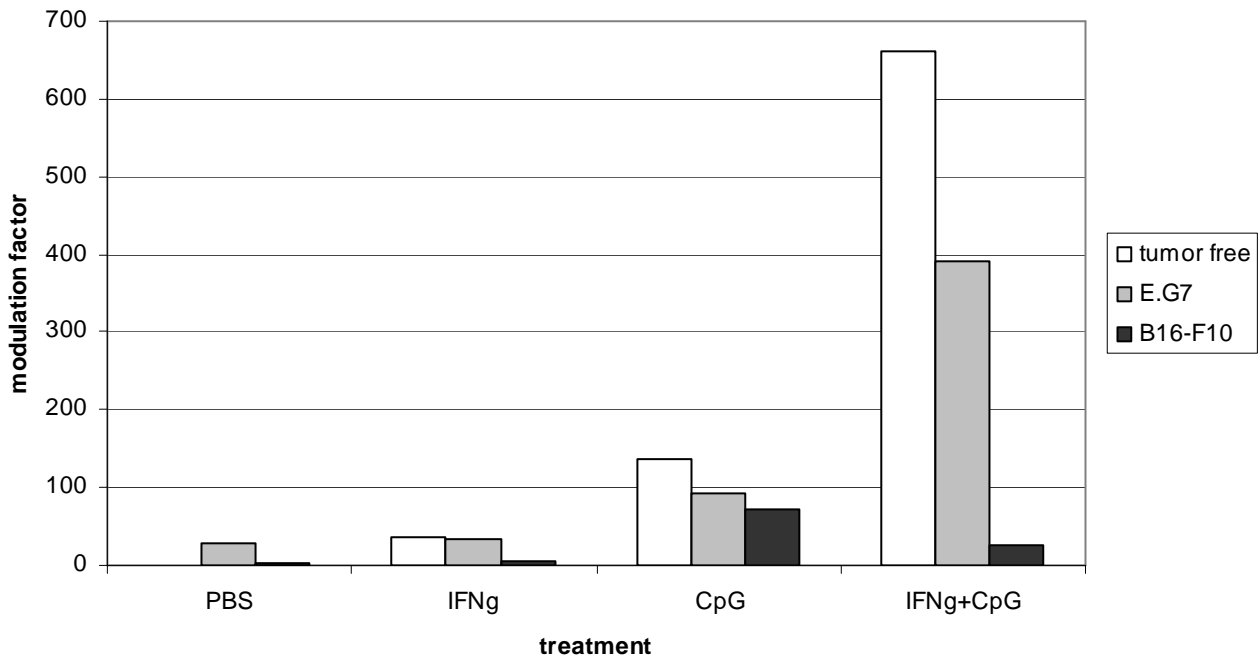
TEL.-00341604

Figure 7
Donnou S.



caractérisation des cellules microgliales adultes et de leur potentiel en immunothérapie des tumeurs cérébrales
TEL-00341604

Figure 8
Donnou S.



caractérisation des cellules microgliales adultes et de leur potentiel en immunothérapie des tumeurs cérébrales
TEL-00341604

