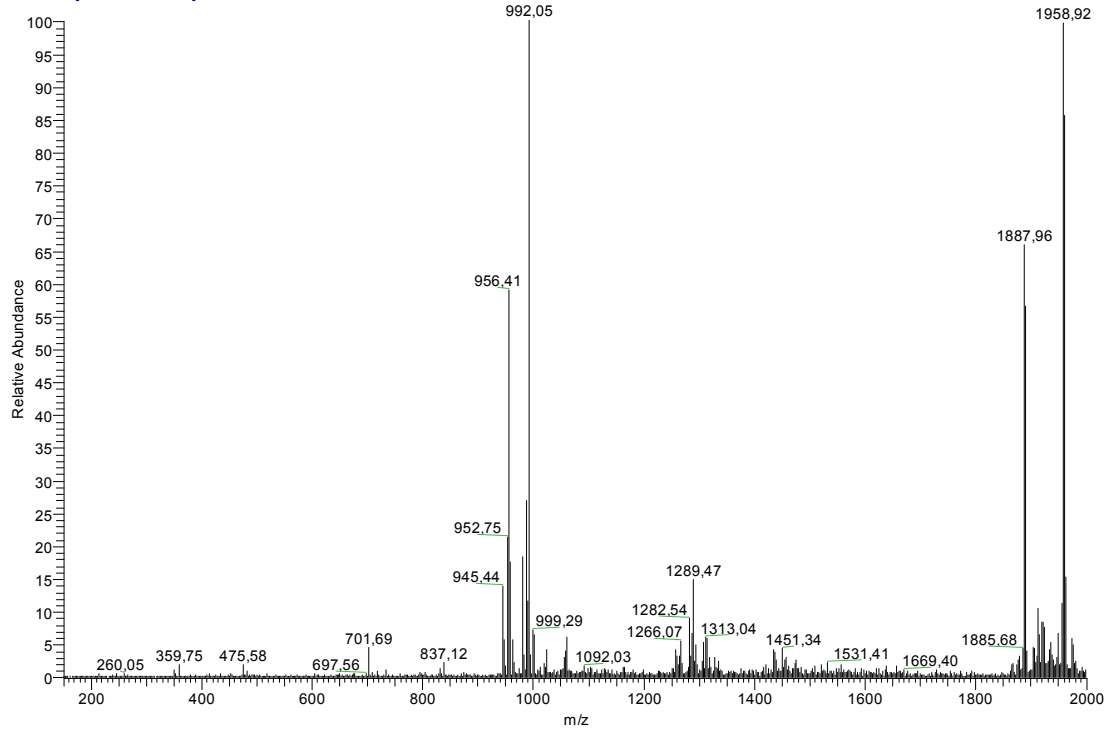


## **Spectres ESI-SM des peptaïbols déjà connus produits par *Trichoderma* MMS 147**

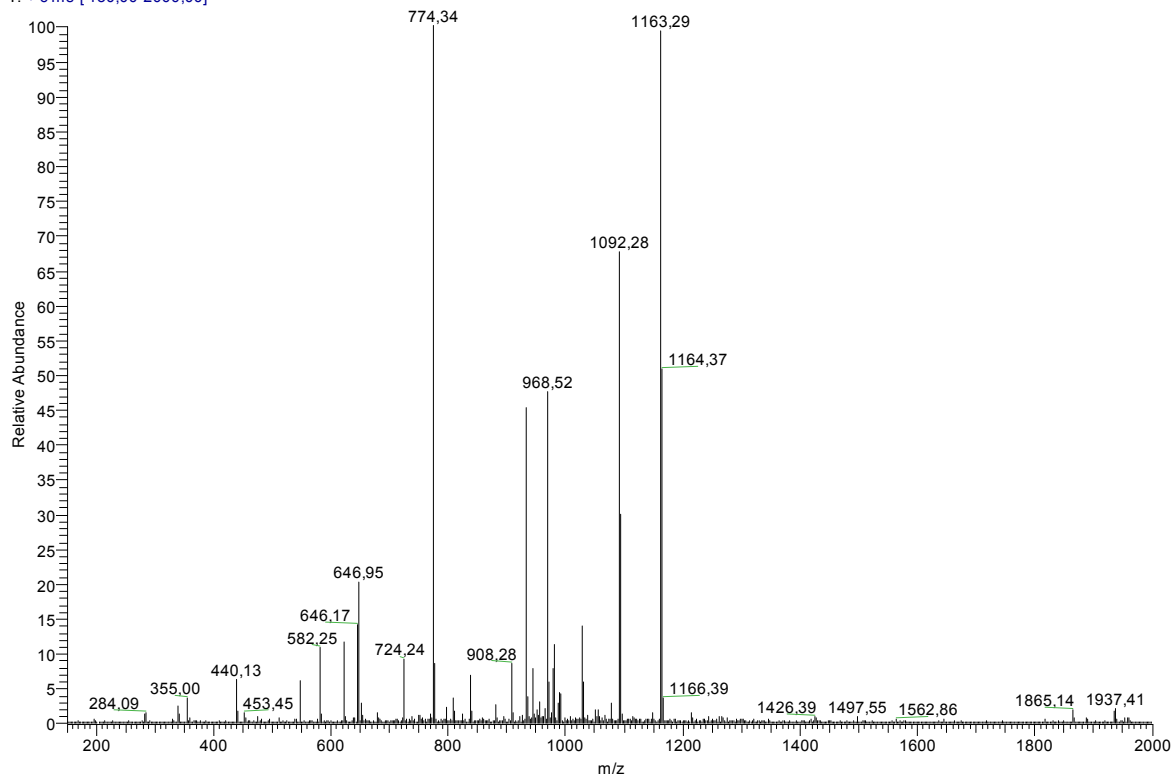
### **Fraction HPLC 3 peptides 4 et 5** Sans TFA, Full scan

Souche11HPLCopt3ssTFAFull #58-62 RT: 1,71-1,83 AV: 5 NL: 4,39E7  
T: + c ms [ 150,00-2000,00]



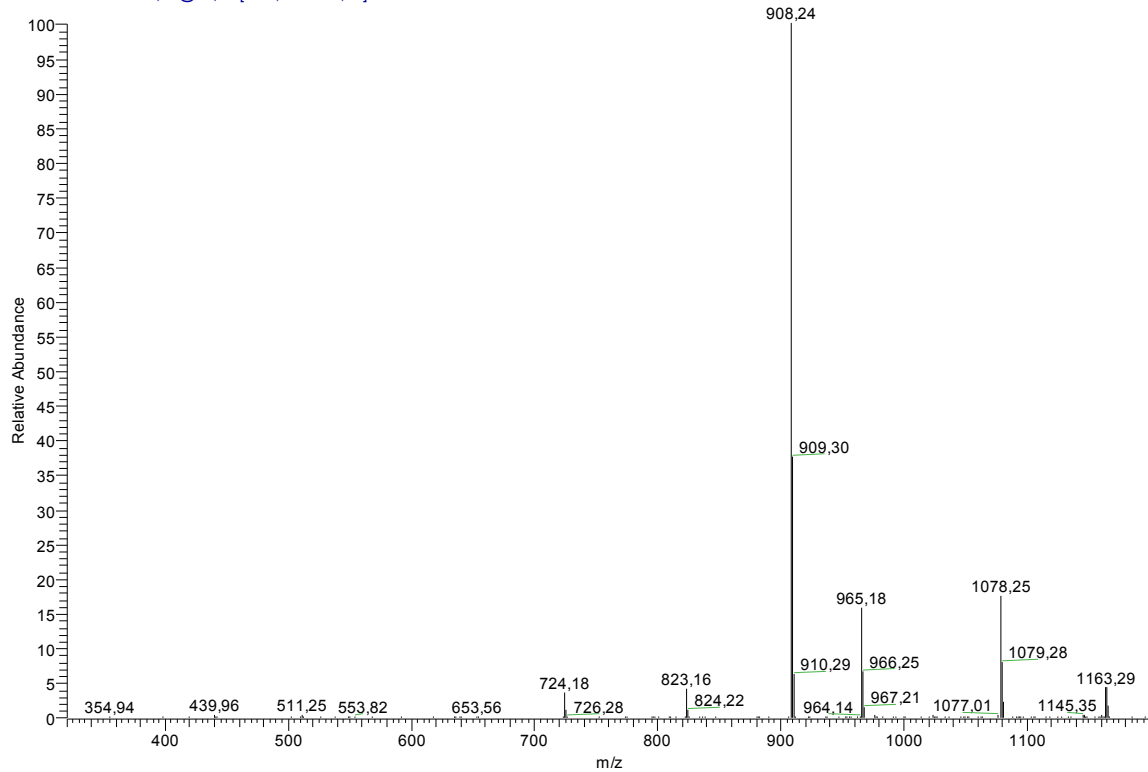
### Après addition de TFA, Full scan

S11-10%HPLC3opt+TFAFull #25 RT: 0,72 AV: 1 NL: 4,23E7  
T: + c ms [ 150,00-2000,00]

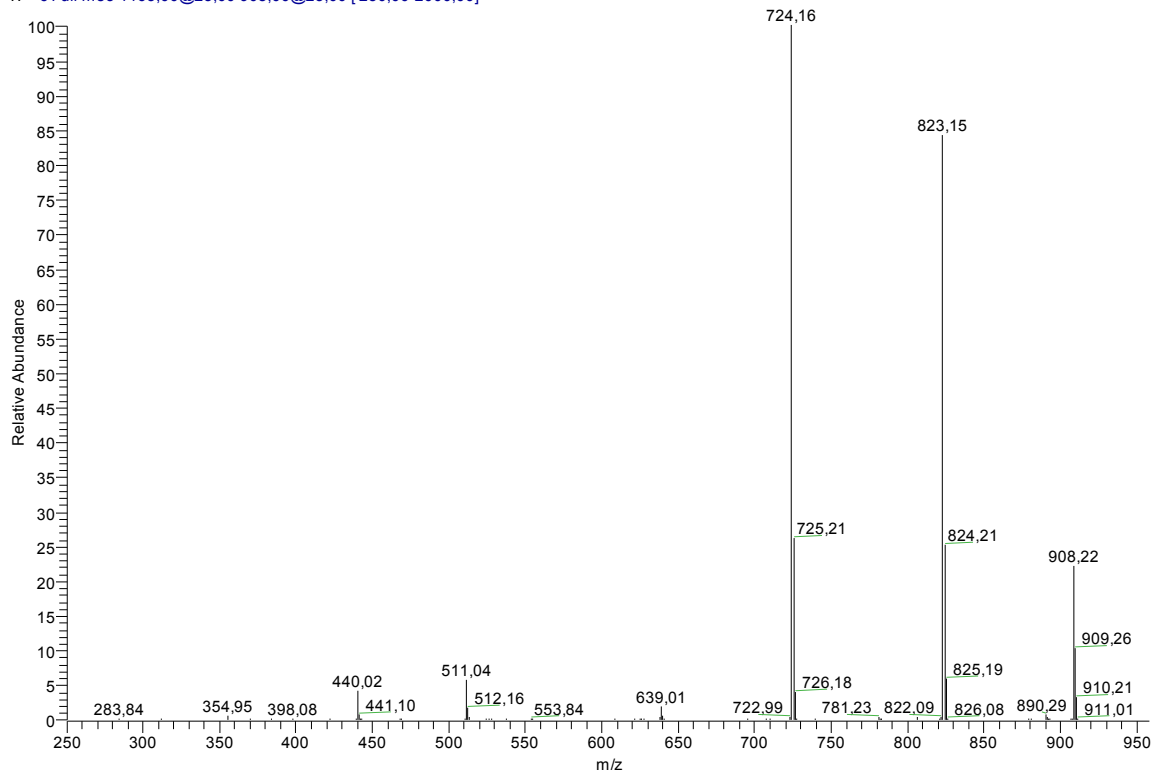


MS<sup>2</sup> de l'ion 1163

S11-10%HPLC3opt+TFAMS2-1163 #3-8 RT: 0,07-0,19 AV: 6 NL: 2,43E7  
T: + c Full ms2 1163,00@23,00 [320,00-2000,00]

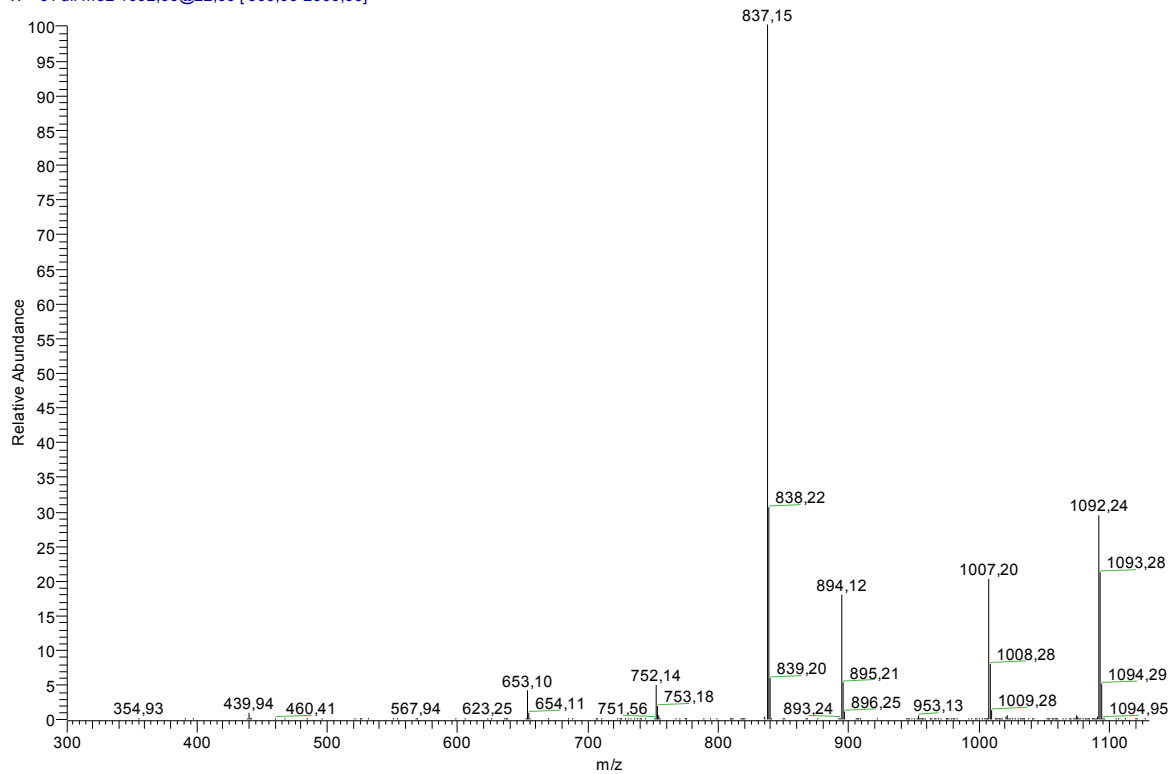
MS<sup>3</sup> de l'ion 908

S11-10%HPLC3opt+TFAMS3-908 #4-11 RT: 0,11-0,31 AV: 8 NL: 1,75E7  
T: + c Full ms3 1163,00@23,00 908,00@23,00 [250,00-2000,00]

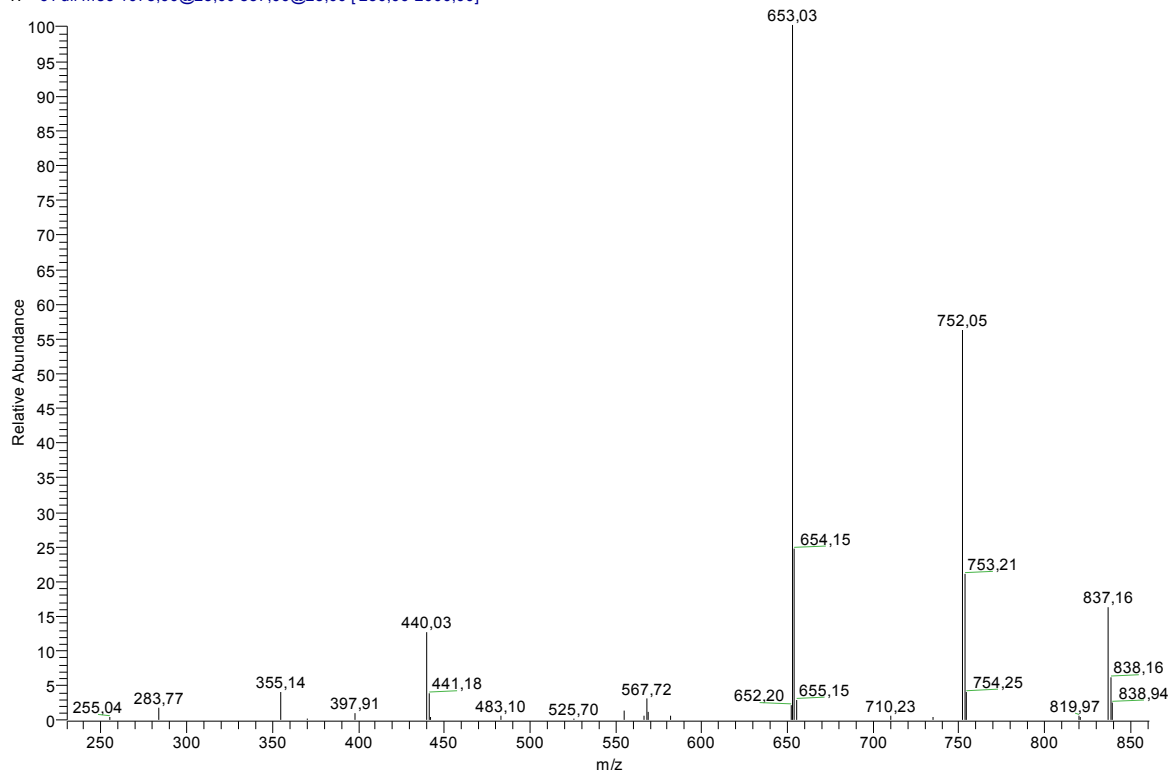


MS<sup>2</sup> de l'ion 1092

Souche11HPLCopt3+TFASM1092 #14-21 RT: 0,34-0,53 AV: 8 NL: 1,01E7  
T: + c Full ms2 1092,00@22,00 [300,00-2000,00]

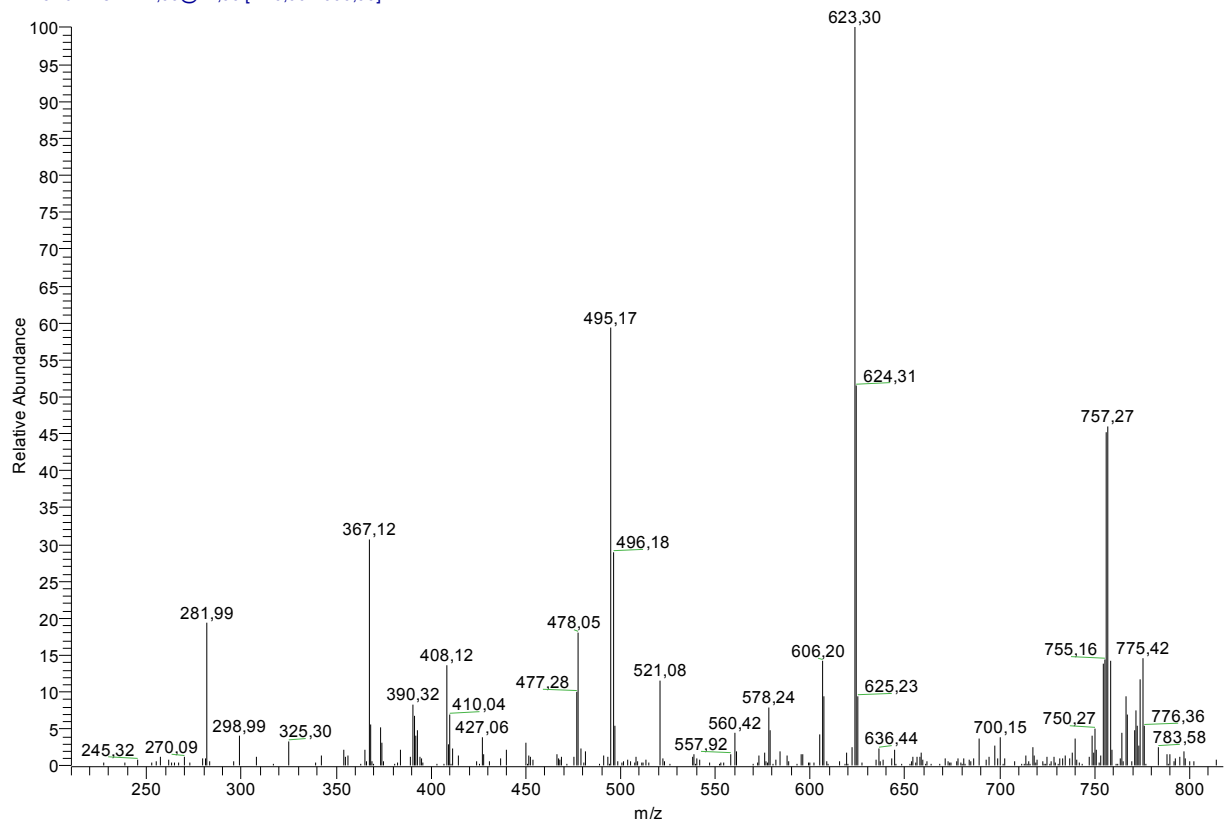
MS<sup>3</sup> de l'ion 837

S11-10%HPLC2opt+TFAMS3-837 #5-6 RT: 0,14-0,17 AV: 2 NL: 2,90E5  
T: + c Full ms3 1078,00@23,00 837,00@23,00 [230,00-2000,00]



MS<sup>2</sup> de l'ion 774

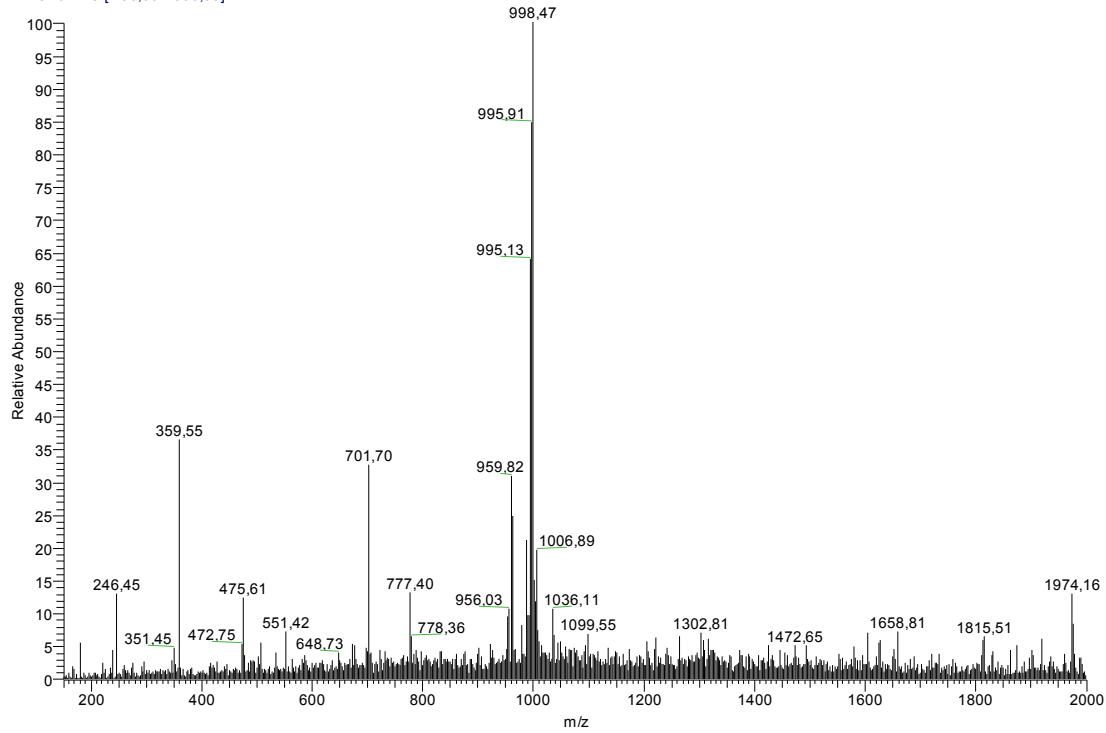
S11-10%HPLC4opt+TFAMS2-774 #6-18 RT: 0,16-0,50 AV: 13 NL: 1,16E5  
T: + c Full ms2 774,00@27,00 [ 210,00-2000,00]



## Spectres ESI-SM des peptaïbols déjà connus produits par *Trichoderma* MMS 147

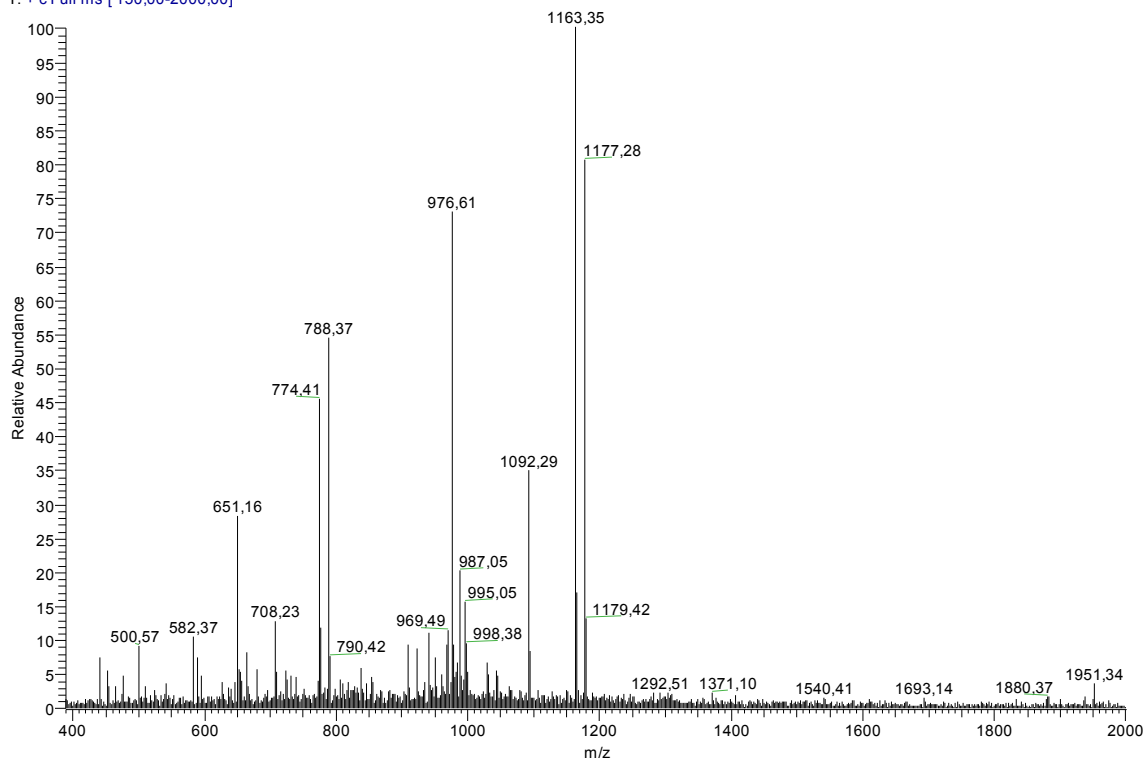
### Fraction HPLC 4 peptides 6 et 7 Sans TFA, Full scan

S11-10%HPLC4optssTFAMFull #40 RT: 1,20 AV: 1 NL: 3,17E6  
T: + c Full ms [150,00-2000,00]



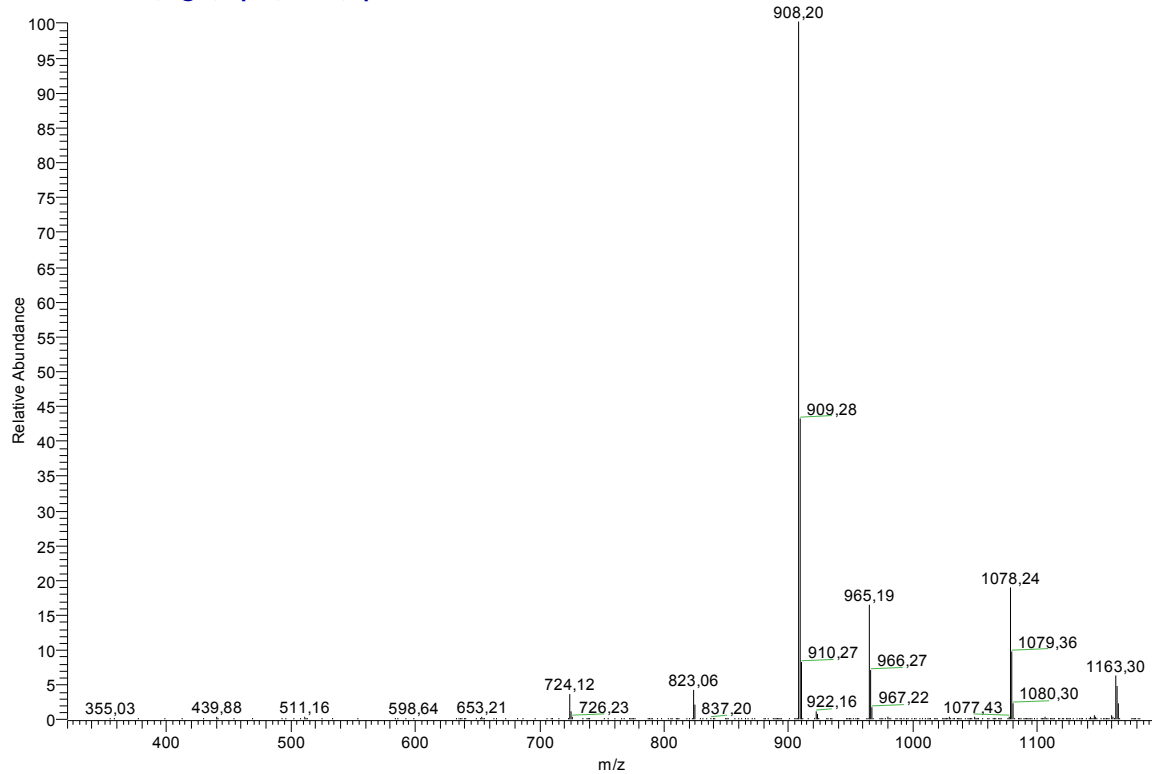
### Après addition de TFA, Full scan

S11-10%HPLC4opt+TFAMFull #22 RT: 0,65 AV: 1 NL: 5,08E6  
T: + c Full ms [150,00-2000,00]

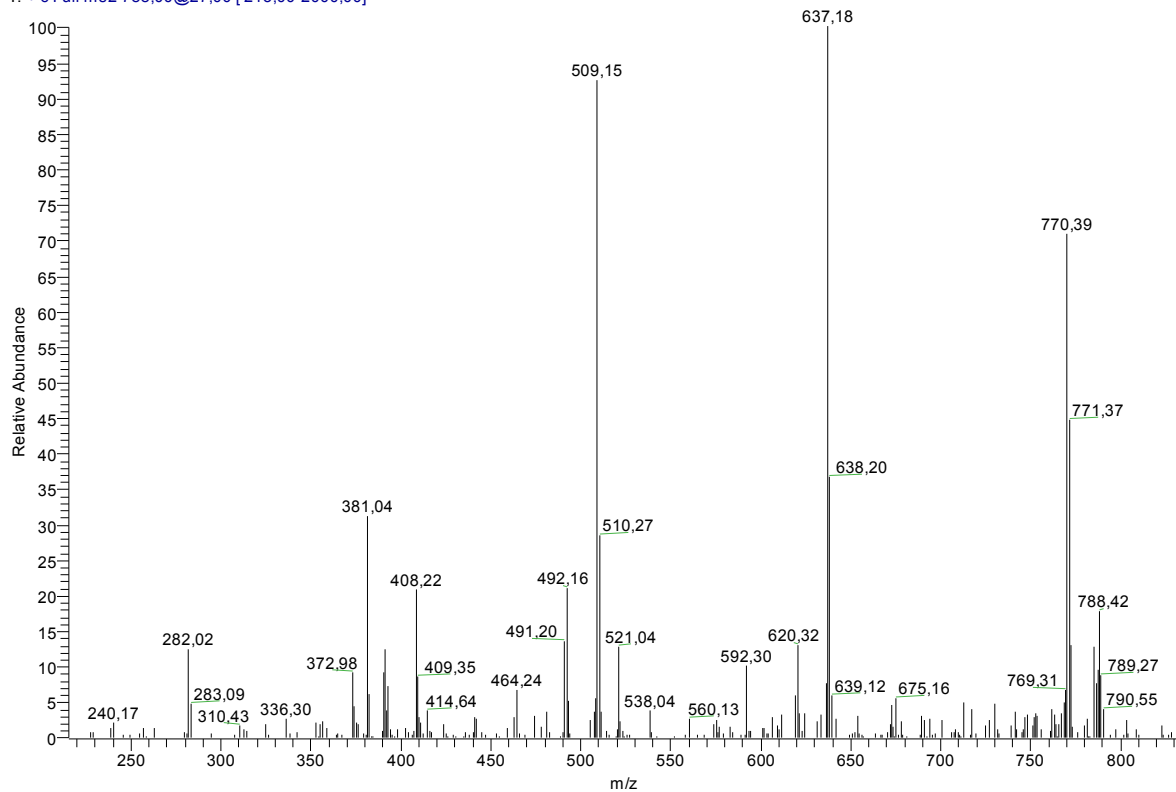


MS<sup>2</sup> de l'ion 1163

S11-10%HPLC4opt+TFAMS2-1163 #19-32 RT: 0,49-0,85 AV: 14 NL: 2,51E6  
T: + c Full ms2 1163,00@23,00 [320,00-2000,00]

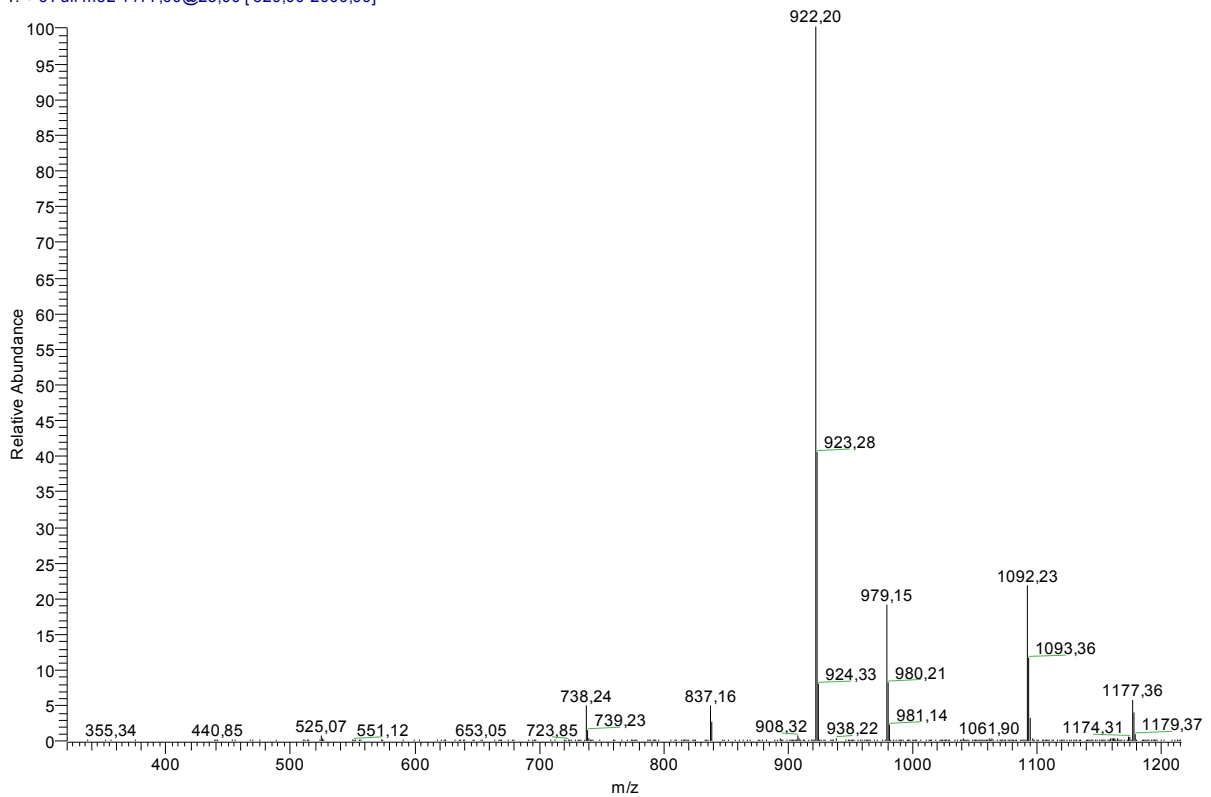
MS<sup>2</sup> de l'ion 788

S11-10%HPLC4opt+TFAMS2-788 #19-26 RT: 0,52-0,72 AV: 8 NL: 7,88E4  
T: + c Full ms2 788,00@27,00 [215,00-2000,00]

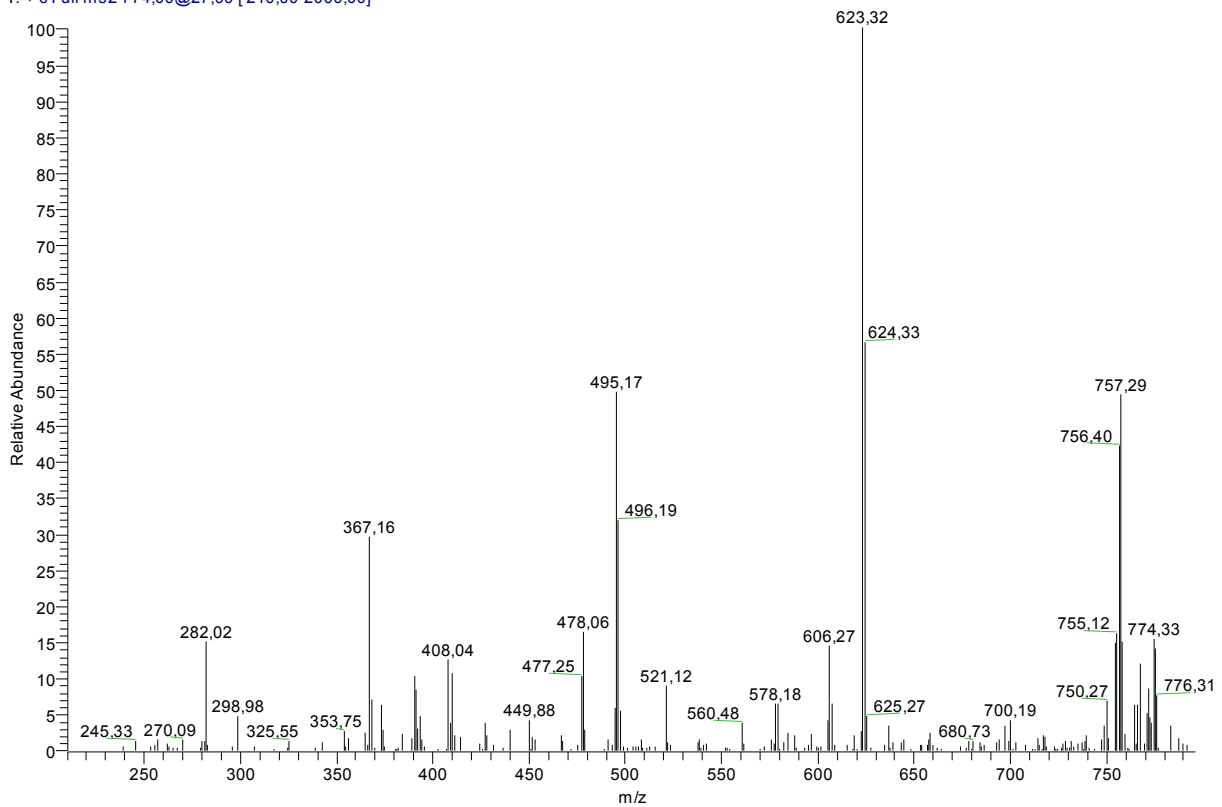


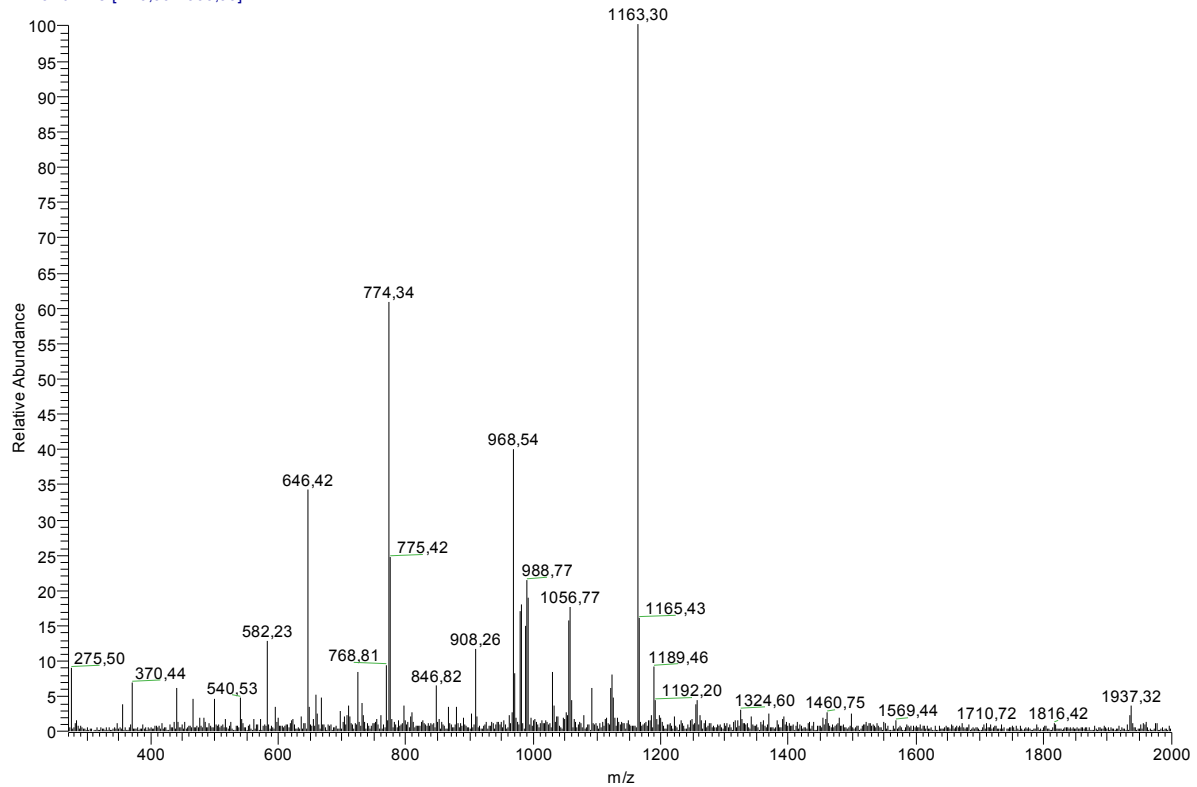
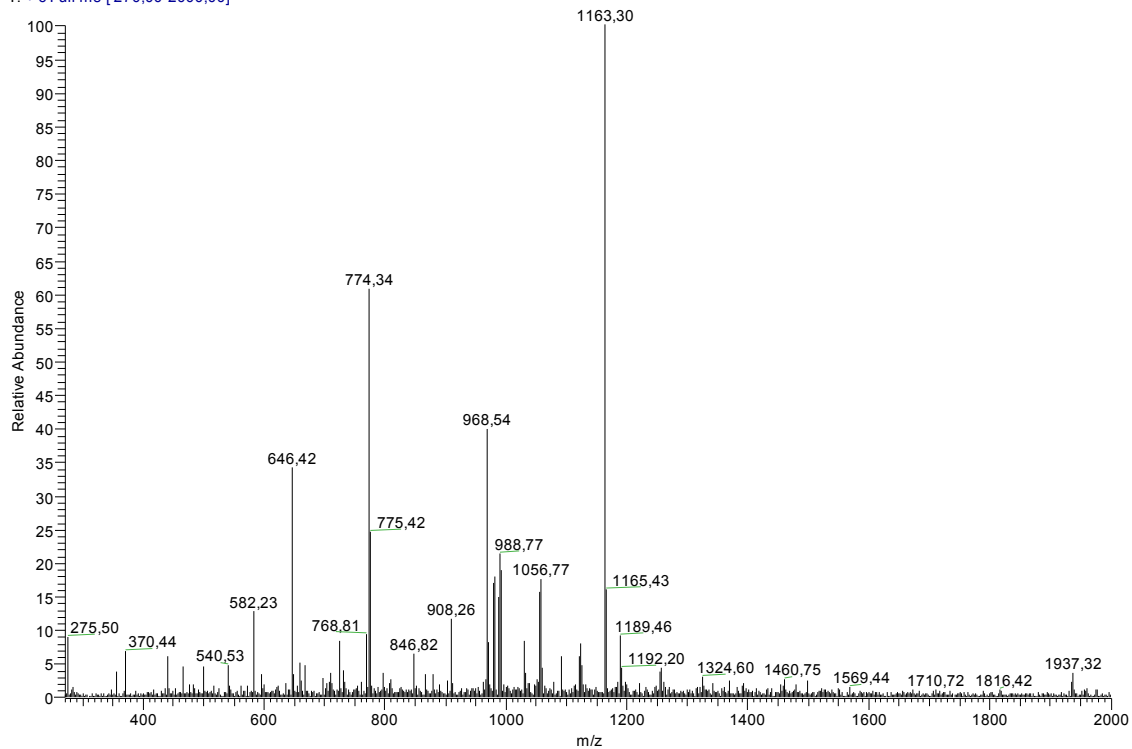
MS<sup>2</sup> de l'ion 1177

S11-10%HPLC4opt+TFAMS2-1177 #9-19 RT: 0,24-0,51 AV: 11 NL: 2,27E6  
T: + c Full ms2 1177,00@23,00 [320,00-2000,00]

MS<sup>2</sup> de l'ion 774

S11-10%HPLC4opt+TFAMS2-774 #8 RT: 0,21 AV: 1 NL: 1,15E5  
T: + c Full ms2 774,00@27,00 [210,00-2000,00]

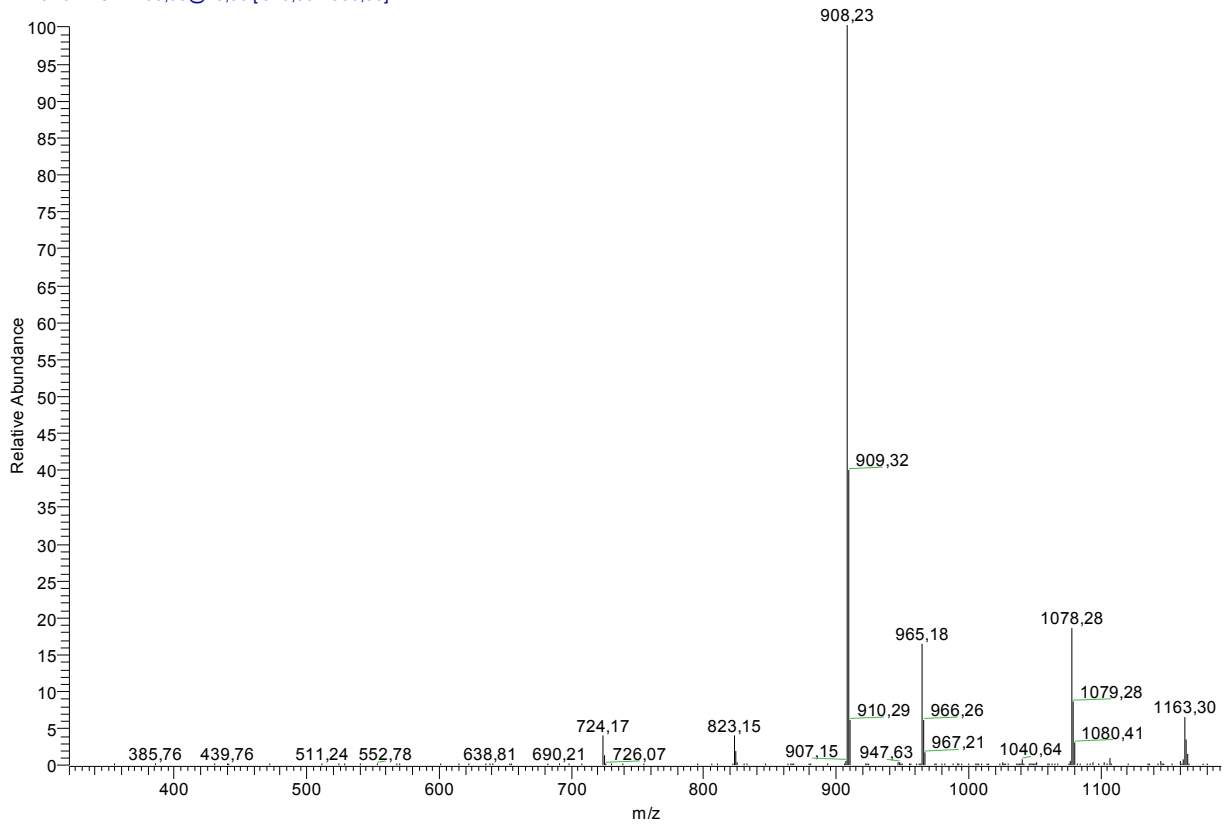


**Spectres ESI-SM des peptaïbols déjà connus produits par *Trichoderma* MMS 151****Fraction HPLC 5 peptides 5** (idem que peptide 1 HPLC 1 MMS 175 et peptide 4 HPLC 4 MMS 204)  
Sans TFA, Full scanS13-10%HPLC5opt+TFAFull #3-16 RT: 0,06-0,45 AV: 14 NL: 6,05E5  
T: + c Full ms [270,00-2000,00]**Après addition de TFA, Full scan**S13-10%HPLC5opt+TFAFull #3-16 RT: 0,06-0,45 AV: 14 NL: 6,05E5  
T: + c Full ms [270,00-2000,00]

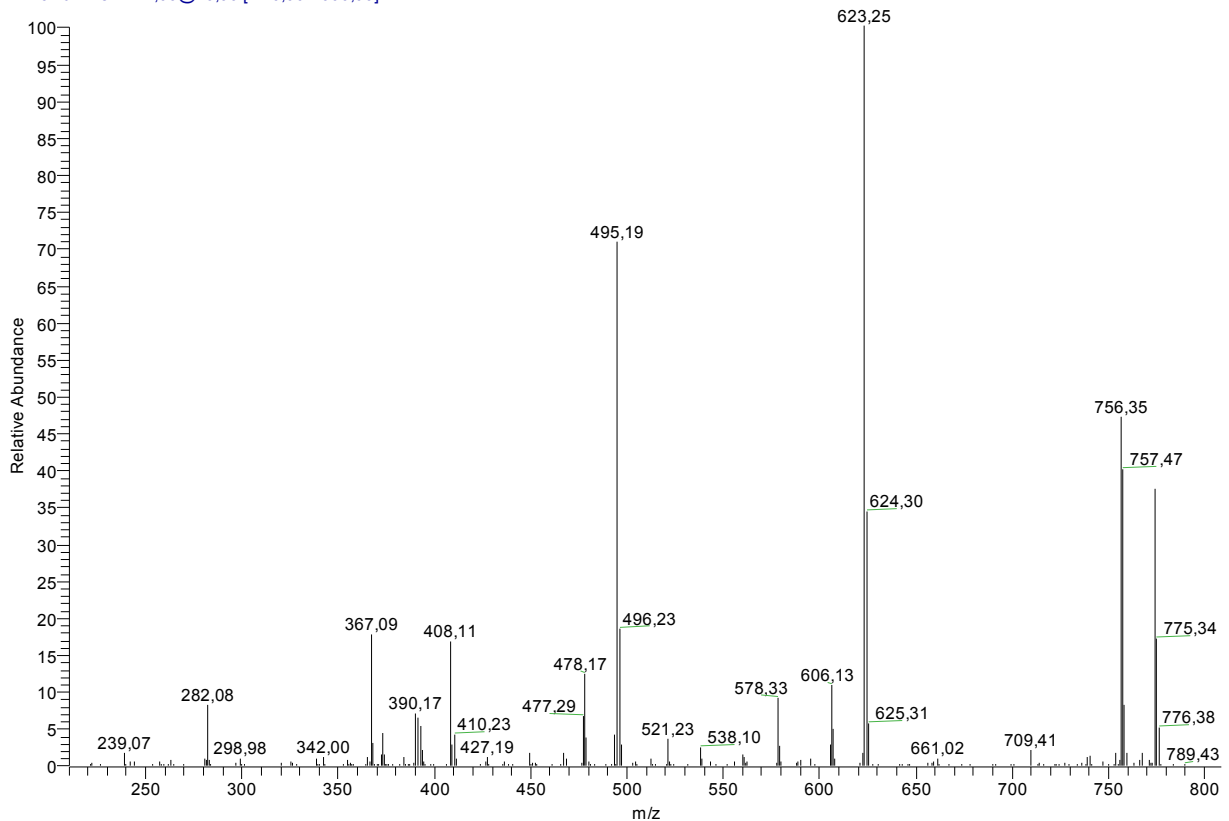


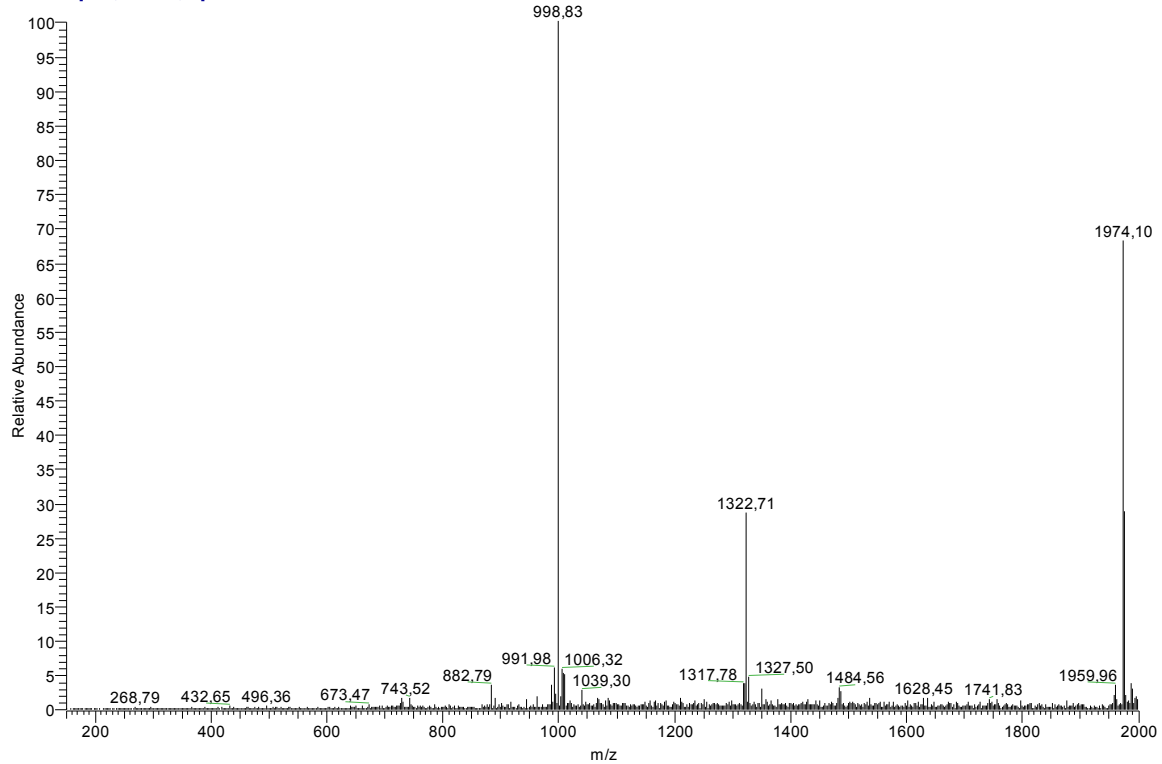
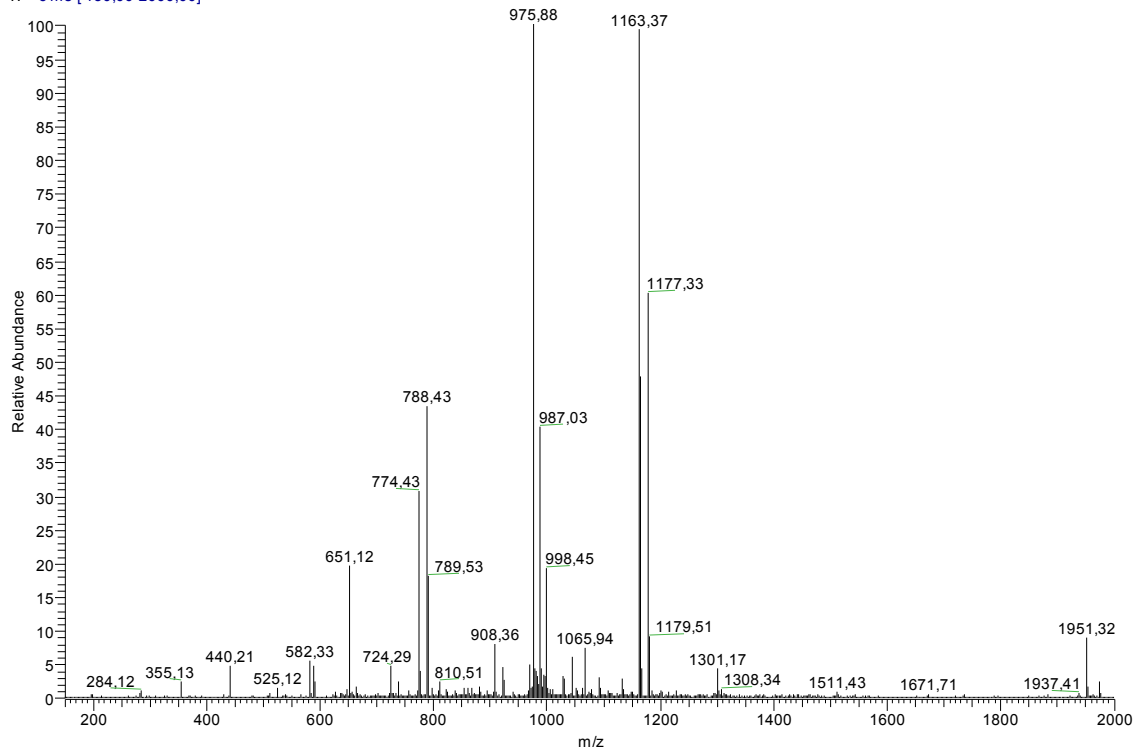
MS<sup>2</sup> de l'ion 1163

S13-10%HPLC5opt+TFAMS2-1163 #15-22 RT: 0,50-0,74 AV: 8 NL: 2,98E5  
T: + c Full ms2 1163,00@23,00 [320,00-2000,00]

MS<sup>2</sup> de l'ion 774

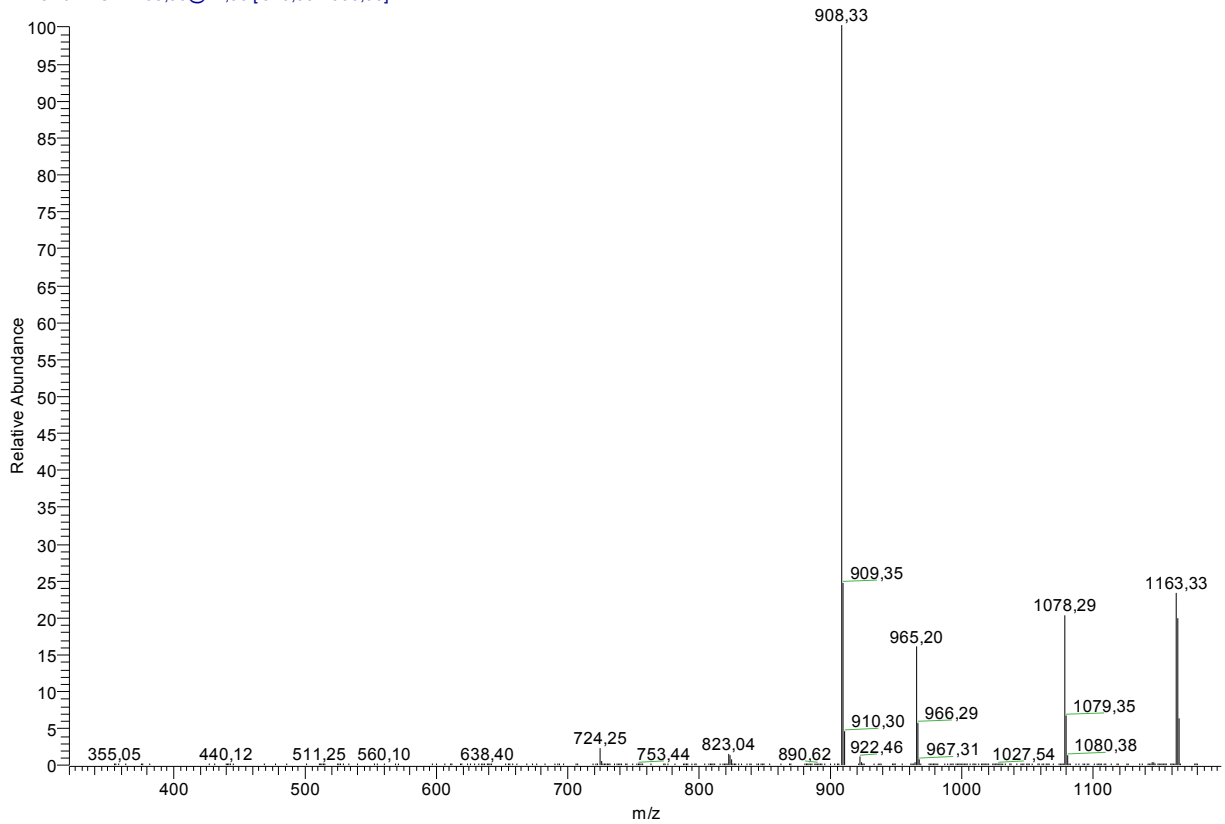
S13-10%HPLC5opt+TFAMS2-774 #3-7 RT: 0,10-0,25 AV: 5 NL: 8,08E4  
T: + c Full ms2 774,00@26,00 [210,00-2000,00]



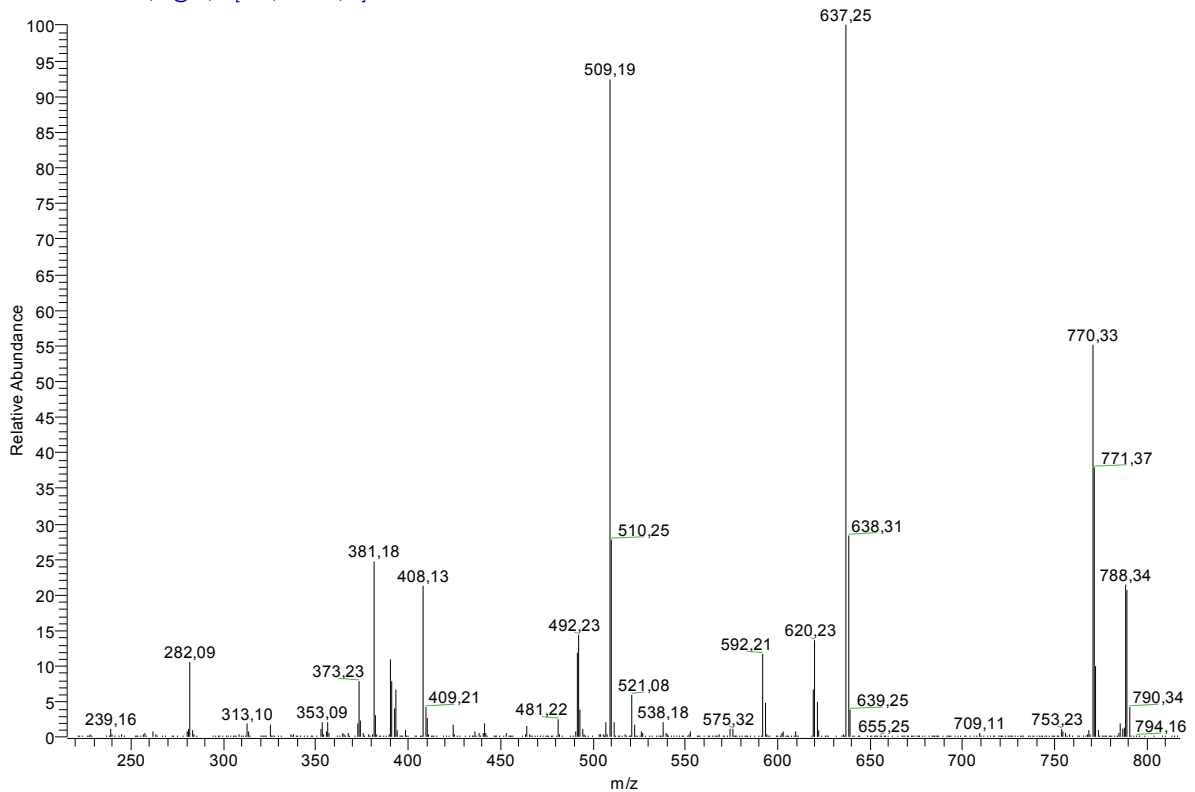
**Spectres ESI-SM des peptaïbols déjà connus produits par *Trichoderma* MMS 151****Fraction HPLC 6 peptides 6 et 7**  
Sans TFA, Full scanS13-10%HPLC6optssAcFull #53 RT: 1,60 AV: 1 NL: 6,41E7  
T: + c ms [ 150,00-2000,00]**Après addition de TFA, Full scan**S13-10%HPLC6opt+TFAFull #26-70 RT: 0,76-2,08 AV: 45 NL: 2,88E7  
T: + c ms [ 150,00-2000,00]

MS<sup>2</sup> de l'ion 1163

S13-10%HPLC6opt+TFAMS2-1163 #12 RT: 0,30 AV: 1 NL: 2,30E7  
T: + c Full ms2 1163,00@22,00 [320,00-2000,00]

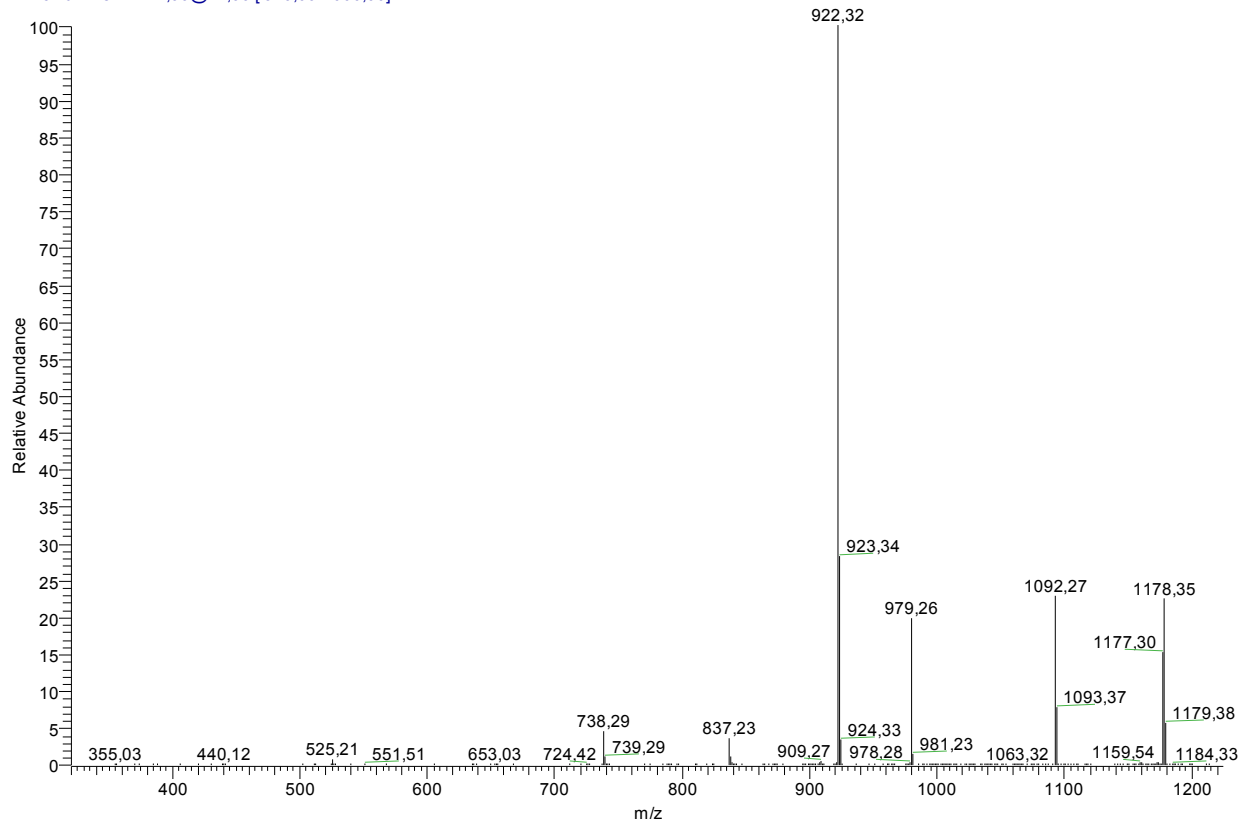
MS<sup>2</sup> de l'ion 788

S13-10%HPLC6opt+TFAMS2-788 #2-5 RT: 0,06-0,14 AV: 4 NL: 3,62E6  
T: + c Full ms2 788,00@26,00 [215,00-2000,00]

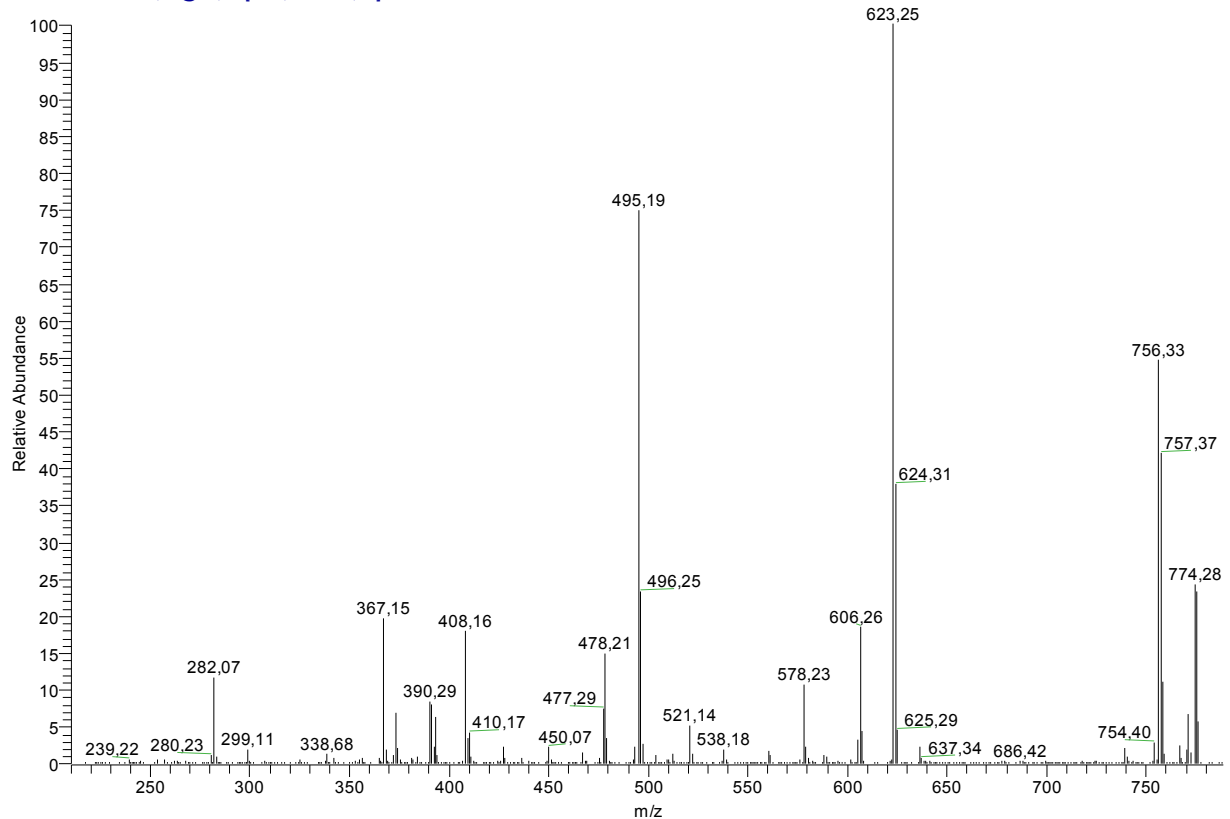


MS<sup>2</sup> de l'ion 1177

S13-10%HPLC6opt+TFAMS2-1177 #2 RT: 0,05 AV: 1 NL: 1,24E7  
T: + c Full ms2 1177,00@22,00 [320,00-2000,00]

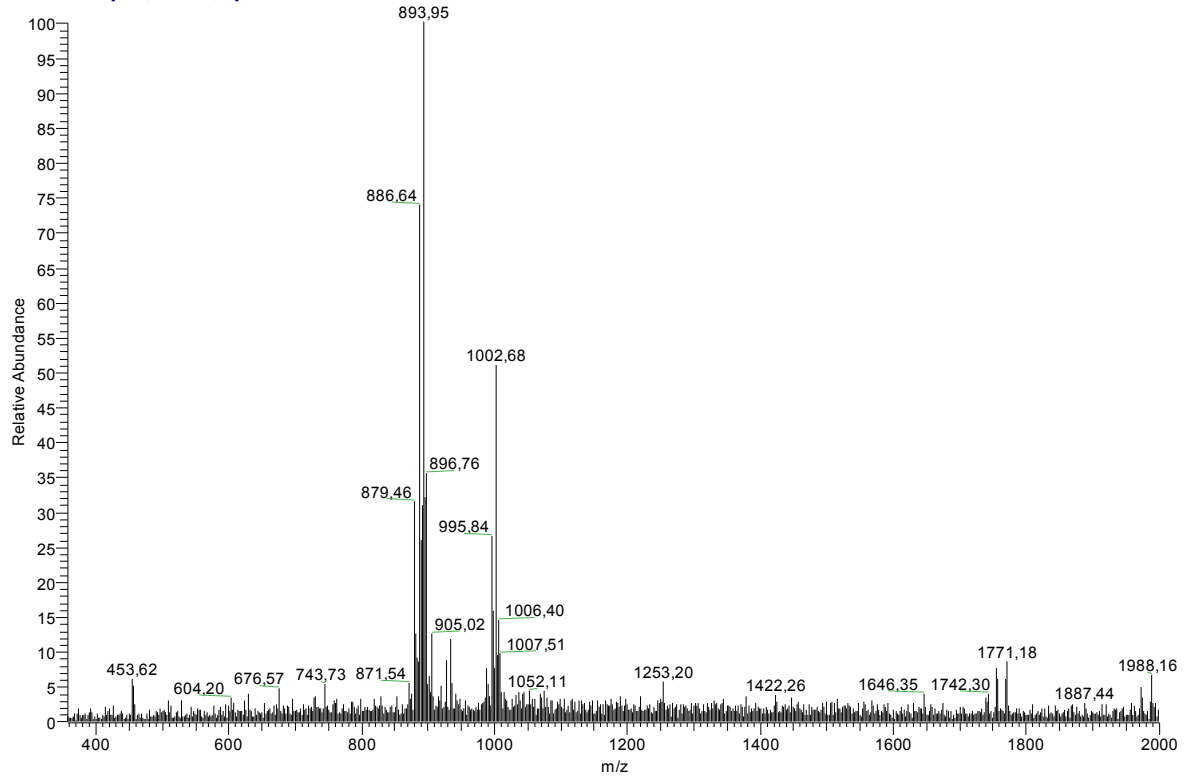
MS<sup>2</sup> de l'ion 774

S13-10%HPLC6opt+TFAMS2-774 #14 RT: 0,41 AV: 1 NL: 4,11E6  
T: + c Full ms2 774,00@26,00 [210,00-2000,00]



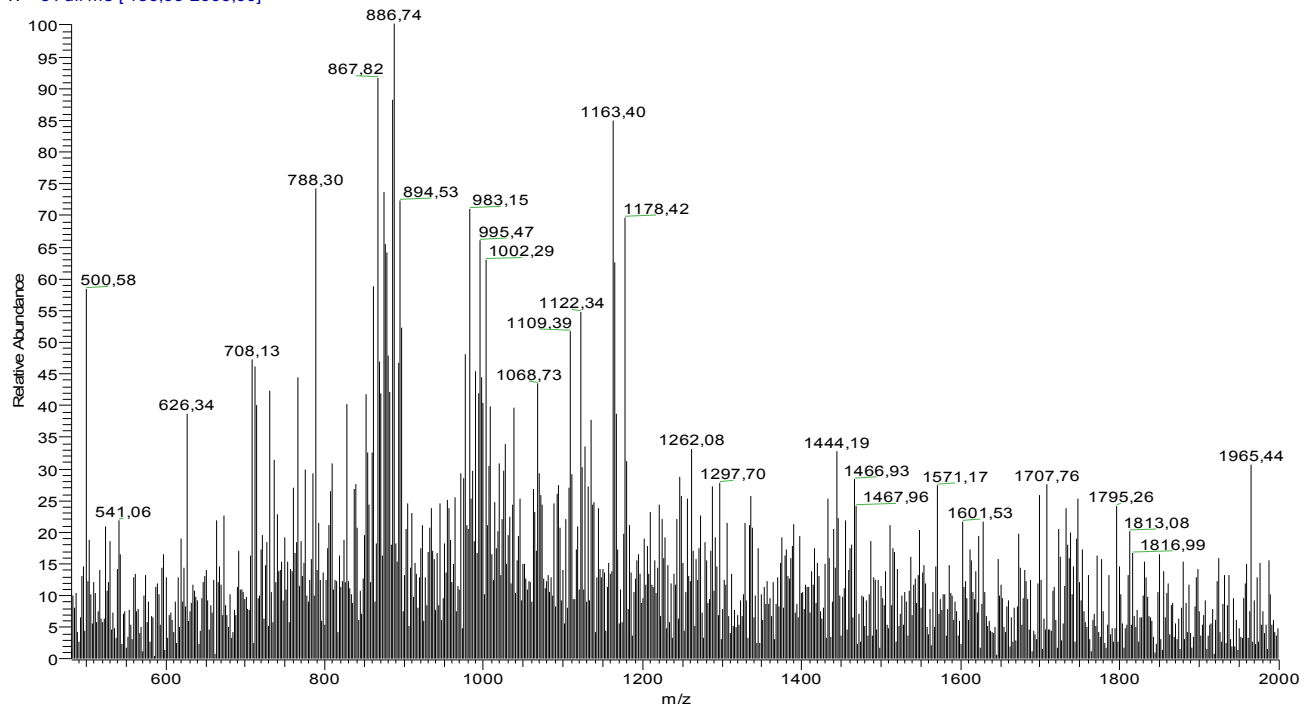
**Spectres ESI-SM des peptaïbols déjà connus produits par *Trichoderma* MMS 151****Fraction HPLC 7 peptides 8**  
Sans TFA, Full scan

S13-10%HPLC7optssAcFull #42 RT: 1,25 AV: 1 NL: 2,64E7  
T: + c Full ms [ 150,00-2000,00]



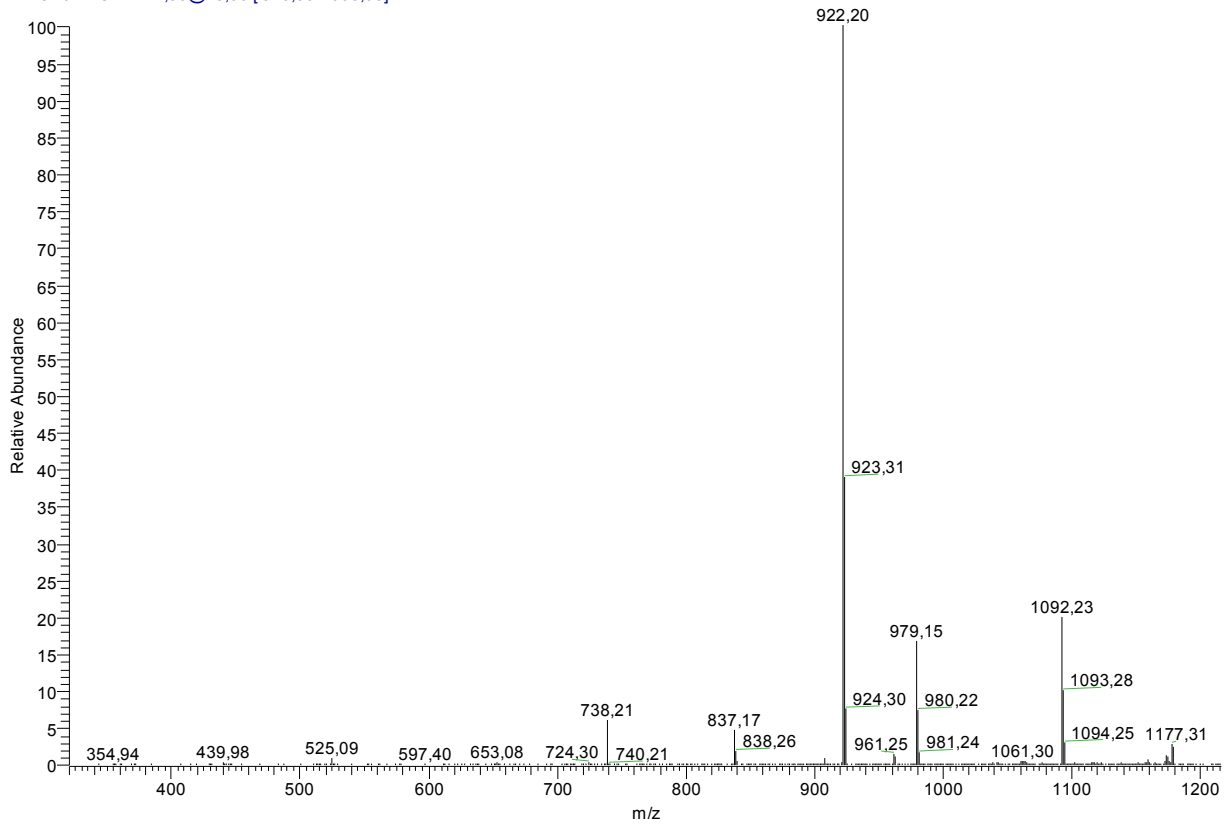
## Après addition de TFA, Full scan

S13-10%HPLC7opt+TFAFull #41 RT: 1,12 AV: 1 NL: 2,35E6  
T: + c Full ms [ 150,00-2000,00]

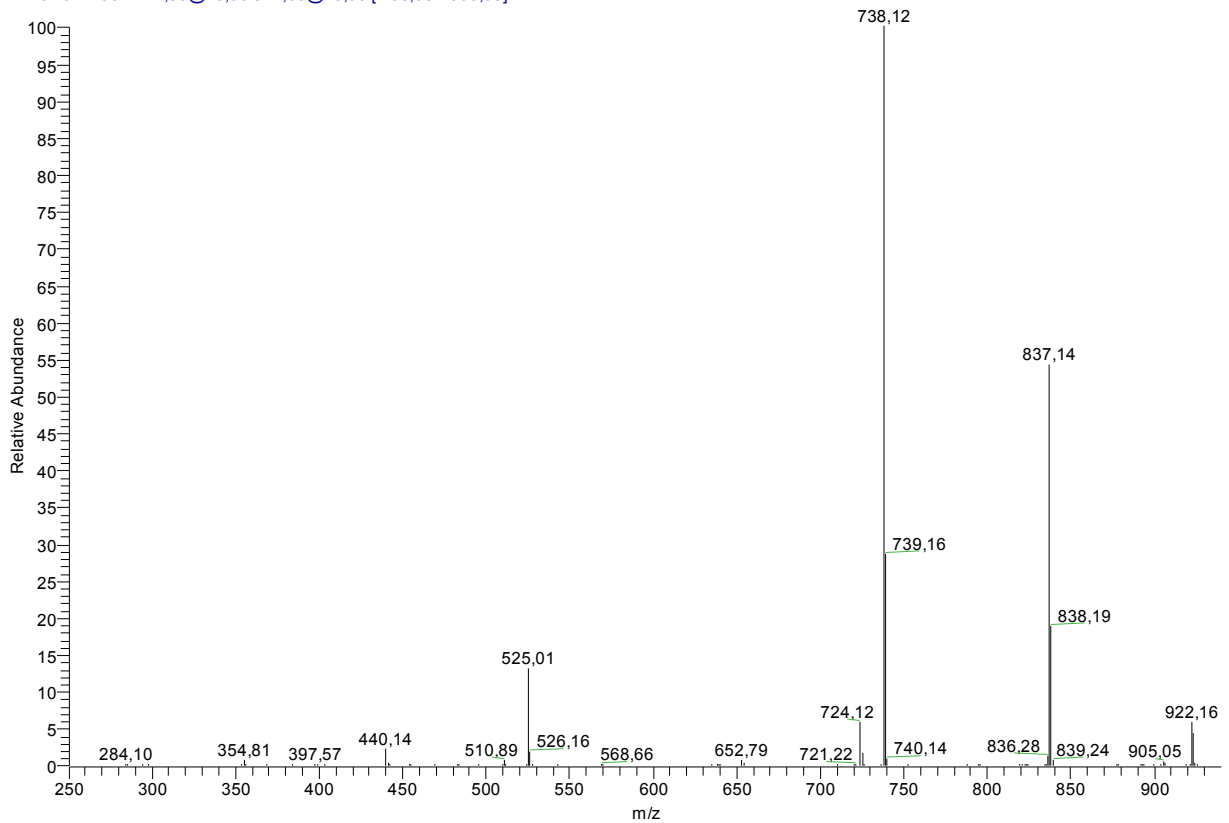


MS<sup>2</sup> de l'ion 1177

S13-10%HPLC7opt+TFAMS2-1177 #6-13 RT: 0,20-0,44 AV: 8 NL: 1,02E6  
T: + c Full ms2 1177,00@23,00 [ 320,00-2000,00]

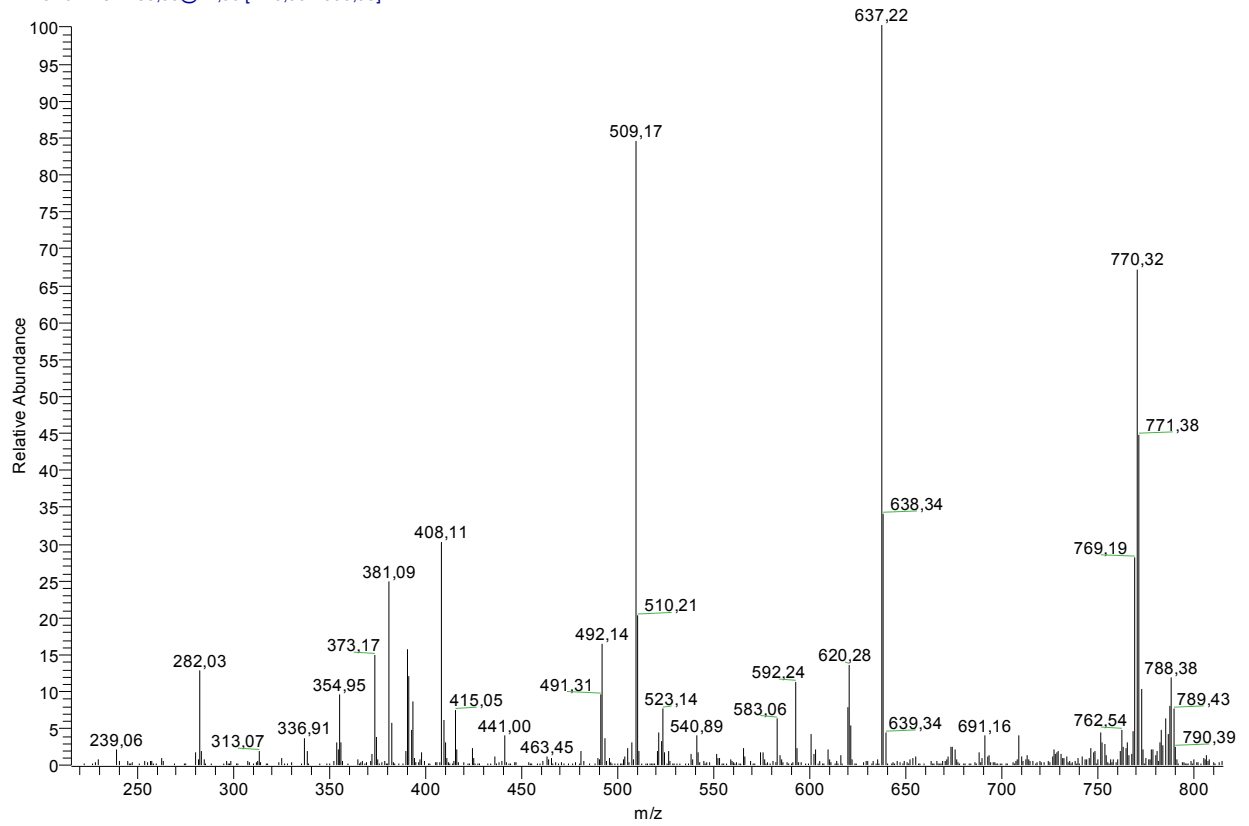
MS<sup>3</sup> de l'ion 922

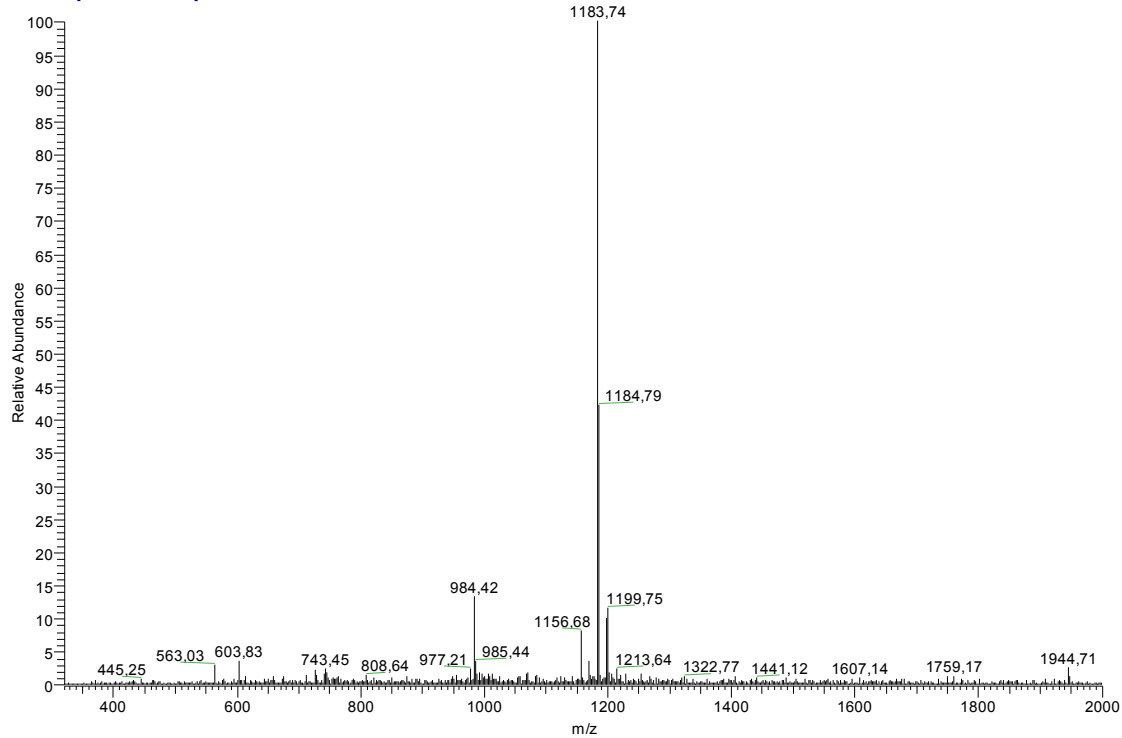
S13-10%HPLC7opt+TFAMS3-922 #60 RT: 2,15 AV: 1 NL: 7,04E5  
T: + c Full ms3 1177,00@23,00 922,00@23,00 [ 250,00-2000,00]



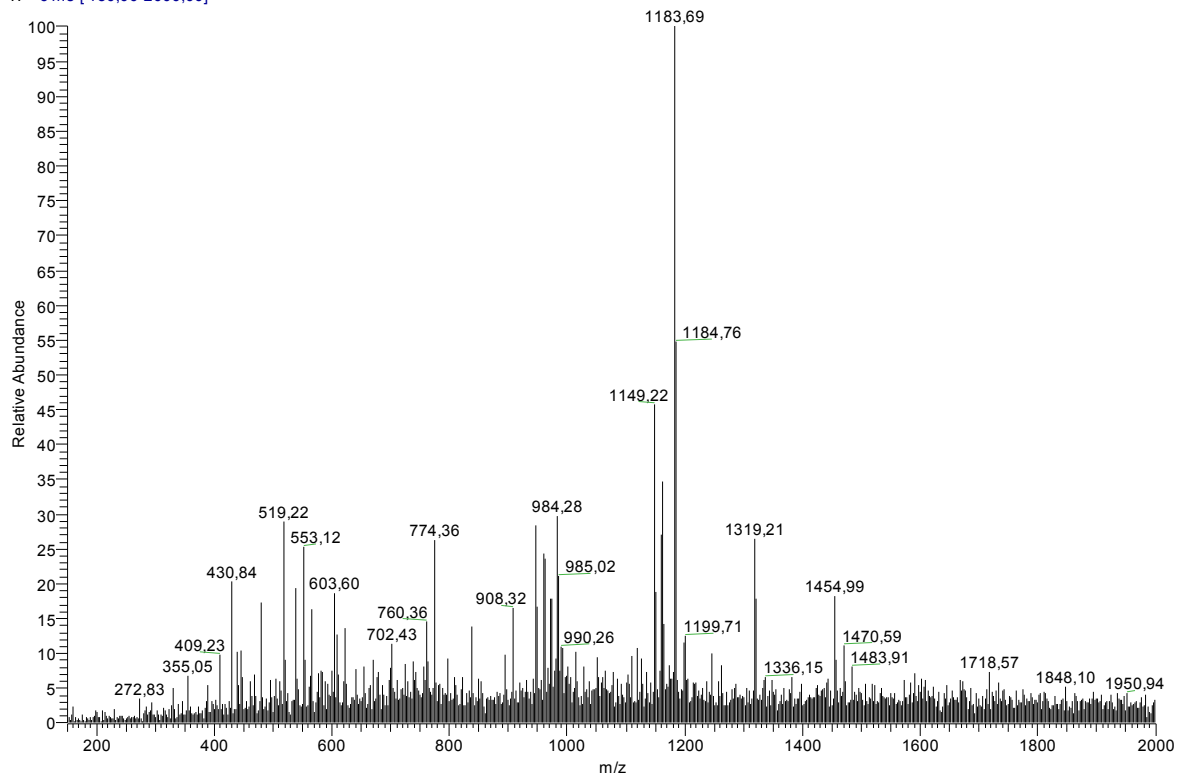
MS<sup>2</sup> de l'ion 788

S13-10%HPLC7opt+TFAMS2-788 #96 RT: 3,35 AV: 1 NL: 4,02E5  
T: + c Full ms2 788,00@27,00 [215,00-2000,00]



**Spectres ESI-SM des peptaïbols déjà connus produits par *Trichoderma* MMS 204****Fraction HPLC 2 peptides 1**  
Sans TFA, Full scanSouche15HPLCopt2ssTFAFull #3 RT: 0,08 AV: 1 NL: 1,09E6  
T: + c ms [320,00-2000,00]

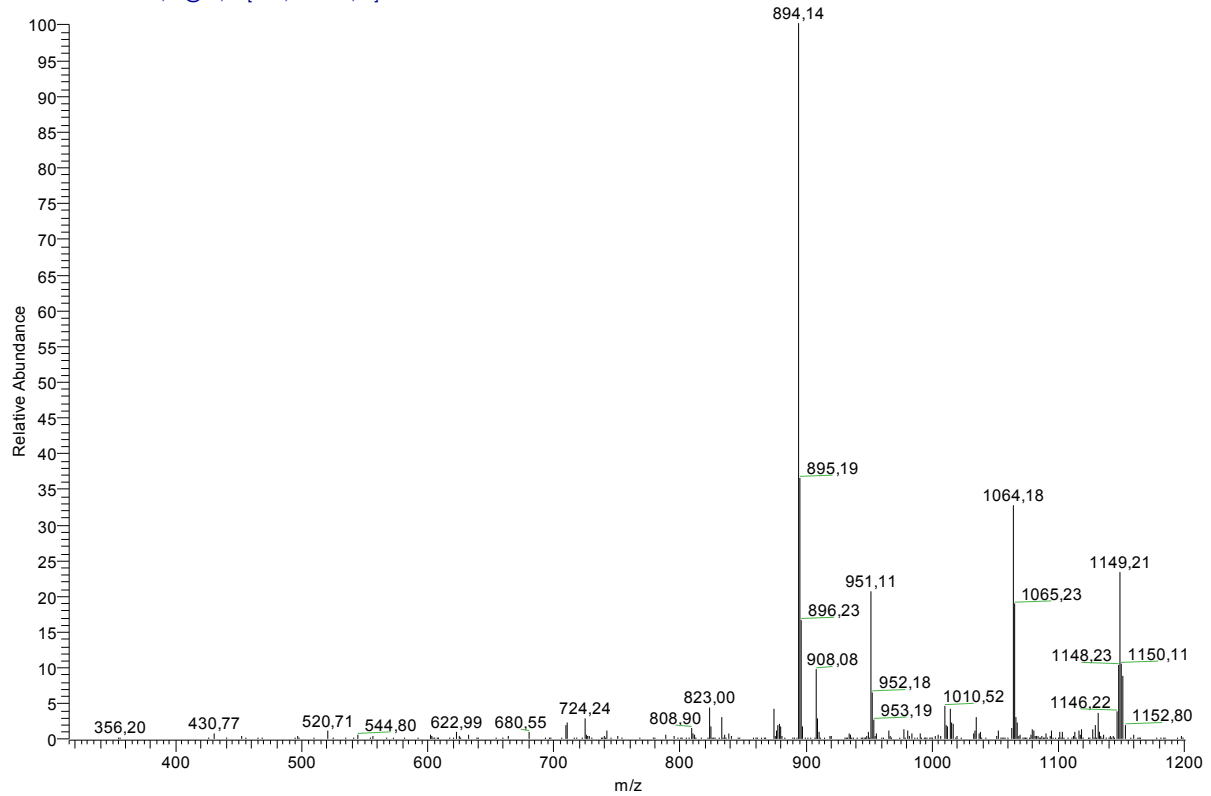
## Après addition de TFA, Full scan

Souche15HPLCopt2+TFAFull\_030801164408 #7-18 RT: 0,19-0,53 AV: 12 NL: 1,05E6  
T: + c ms [150,00-2000,00]

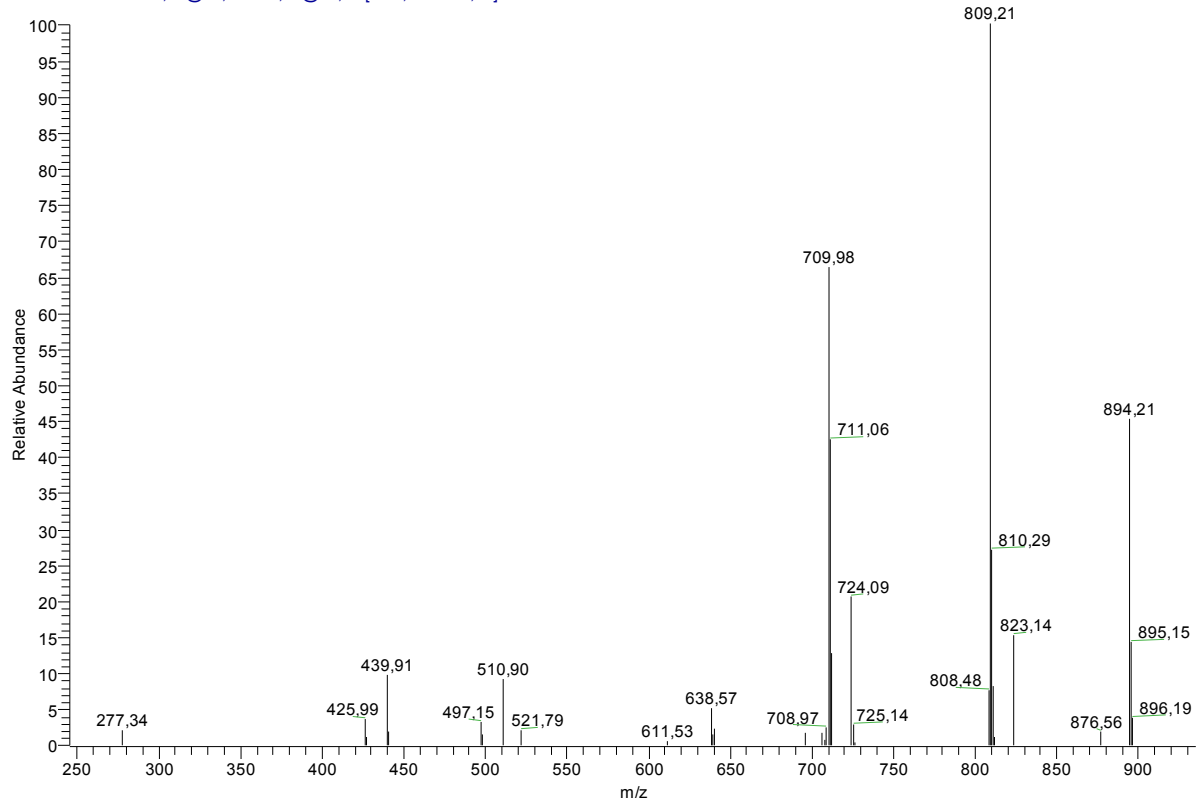


MS<sup>2</sup> de l'ion 1177

Souche15HPLCopt2+TFAMS2-1149 #10-15 RT: 0,27-0,40 AV: 6 NL: 2,27E5  
T: + c Full ms2 1150,00@23,00 [315,00-2000,00]

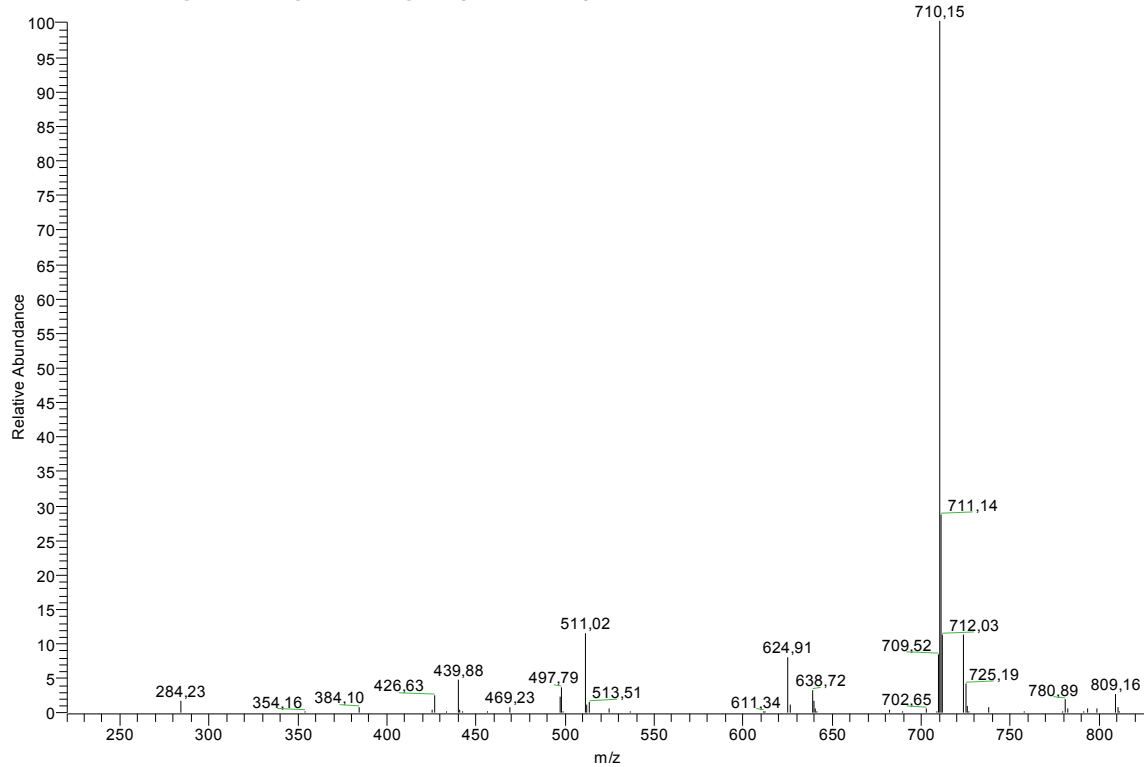
MS<sup>2</sup> de l'ion 1177

Souche15HPLCopt2+TFAMS3-894 #1-6 RT: 0,02-0,17 AV: 6 NL: 2,90E4  
T: + c Full ms3 1150,00@23,00 894,00@23,00 [245,00-2000,00]



MS<sup>3</sup> de l'ion 809

Souche15HPLCopt2+TFAMS4-809 #20 RT: 0.66 AV: 1 NL: 1,02E5  
T: + c Full ms4 1150,00@23,00 894,00@23,00 809,00@23,00 [220,00-2000,00]

MS<sup>2</sup> de l'ion 774

Souche15HPLCopt2+TFAMS2-774 #18 RT: 0.49 AV: 1 NL: 6,58E3  
T: + c Full ms2 774,00@29,00 [210,00-2000,00]

