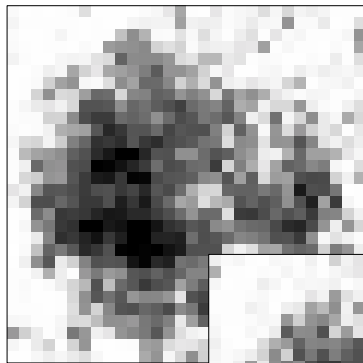
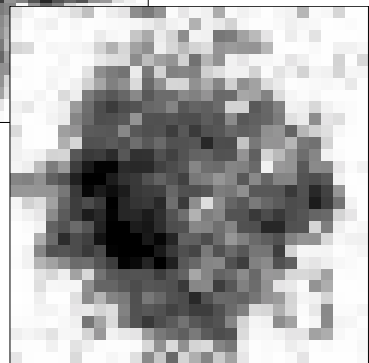
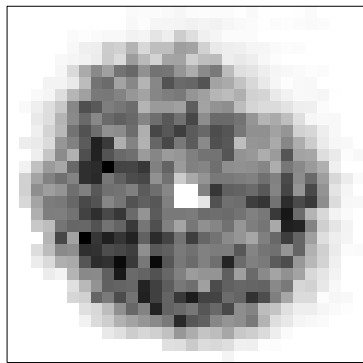
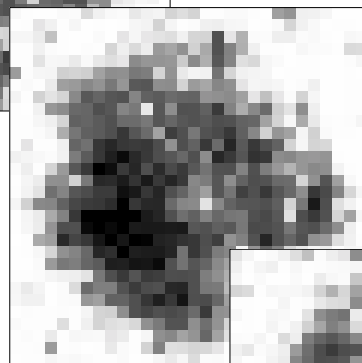
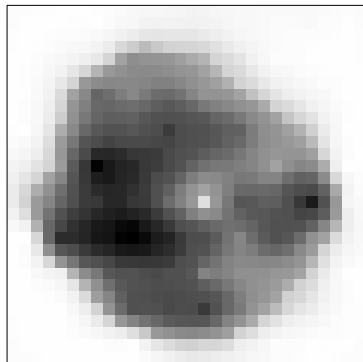
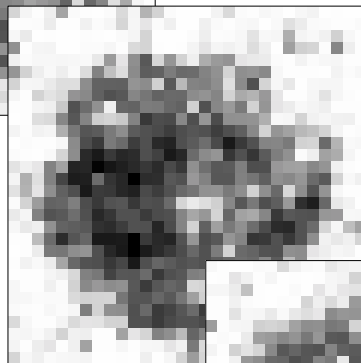
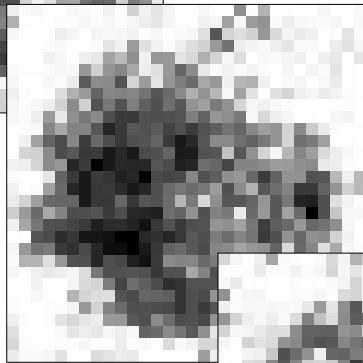


Simulation conditionnelle



10 000 réalisations conditionnées
par l'échantillon systématique
en position centrale



$$\text{Var}_{\xi} \left[Z_D^* - Z_D \right]$$

$$E_{\xi} \left[\text{Var}_p \left[Z_D^* - Z_D \right] \right] = 11.47$$

9.70	9.38	9.46
9.11	7.41	8.86
9.50	9.01	9.55

